



RACE BOOK

2016





Sharing the Sailing Community



Tremendous Slouch – 2015 Boat of the Year

Skipper: Scott Milne

Corinthian Yacht Club of Seattle Race Book 2016

Updated July 29, 2016

7755 Seaview Ave NW, Pier V
Seattle, Washington 98117

www.cycseattle.org • 206.789.1919 • office@cycseattle.org

Contents

Let's Go Sailing!.....	1
About the Club.....	2
Club Programs.....	3
Racing Calendar.....	4
Race Registration.....	5
Entry Fees and Season's Passes.....	6
Notices of Race – Lake Washington.....	7
Notice of Race Lake Tuesday/Wednesday Evening Series.....	7
Notice of Race Lake Fall Regatta.....	8
Notices of Race – Puget Sound.....	9
Notice of Race Center Sound Series.....	9
Notice of Race Center Sound Series: Blakely Rock Race.....	10
Notice of Race Center Sound Series: Scatchet Head Race.....	11
Notice of Race Center Sound Series: Three Tree Point Race.....	12
Notice of Race Puget Sound Spring Regatta (Small Boat).....	13
Notice of Race Puget Sound Spring Regatta (Big Boat).....	14
Notice of Race Sound Wednesday/Thursday Evening Series.....	15
Notice of Race Pacific Northwest One Design (POD) Regatta.....	16
Race Information SSP/CYC Octoberfest Youth Regatta.....	17
Notice of Race Puget Sound Sailing Championship (Big Boat).....	18
Notice of Race Puget Sound Sailing Championship (Small Boat).....	19
Notice of Race Turkey Bowl.....	20
Appendix.....	22
CYC Notice of Race Addendum.....	22
Puget Sound Sailboat Safety Regulations.....	25
US Coast Guard Warning.....	26
Contacts.....	27
Buoy Course Marks (relative positions).....	28
Puget Sound Geographic Marks (fixed positions).....	29

On the Cover

Farr 30 World Championship, hosted by CYC, October 2015

Photo Credits

Cover: Jan Anderson, janpix.smugmug.com
Boat of the Year: Jan Anderson, janpix.smugmug.com

Let's Go Sailing!



Welcome to the 2016 sailboat racing season. We look forward to continuing our tradition of putting on fun events that give us all an excuse to go sailing with our friends and challenge our sailing skills.

Many of us struggle to find a balance between having fun on the water and being competitive. I know when I'm worried about "winning," I have less fun and my performance suffers. So, I'm looking for as much laughter on our boat as we can muster this year.

CYC sometimes struggles with its own balancing act. CYC racing can be seen as "for serious racers." I understand where this perception comes from: CYC puts on more racing than any other club in the nation; much of this racing is windward/leeward buoy racing; and we have world class sailors on the course with us including national and world champions, Olympic medalists, and America's Cup sailors.

While these things are true, ultimately we are just a bunch of sailors doing stuff with and for each other that we couldn't do alone. Please come have fun with us, help our new Fleet Captain Race, Matthew Wood make events that you enjoy and help us eliminate any intimidation factors (real or perceived). What ties us all together is the joy of being connected to the wind and water with our friends and family.

Jerry Diercks, Commodore



First off, I would like to extend a greeting to all our new members who have joined us for the upcoming season. Welcome aboard!

CYC hosts over 100 days of racing and 1,000 starts per year. Between our growing Lake Fleet (featuring the largest active J/24 fleet in the country!) and our world renowned Puget Sound racing, anyone with an interest in any type/size/level of commitment in sailing, from Lasers to IRC maxis, can participate and know they will experience a fun, safe and fair event.

The theme of the upcoming season, as well iterated by our incoming Commodore Jerry Diercks, is VOLUNTEERISM. This is YOUR club, and it exists for, and by, the membership themselves. Whether it is race committee work, bartending, helping set up and break down events, or the other myriad of details that make things "happen", it must include YOU. Without utilizing the broad and talented pool of people that make up CYC Seattle, the events we all have come to count on for enjoyment can't, and won't. I URGE each and every one of you, captain and crew, to take a look at your participation in this great platform we have called CYC and give back some of your time and effort.

I assure you, it will always be worth it! Please look me up if you have any questions, and let's go racing!

Matthew Wood, Fleet Captain Race

About the Club

Our club was founded in 1945 by sailors who came up with the idea while in a small ski hut in the Cascade Mountains. They wanted to race more and socialize more with their sailing friends. Corinthian Yacht Club has become the region's preeminent club for people who love sailing, whether or not they happen to own a boat. Our activities include racing, cruising, youth sailing, education, and social events.

The club is a not-for-profit corporation of Washington that is owned by the members. While it is not a charity, it is also not a typical company or non-profit. Instead it is more of a cooperative or shared property where the members remain in charge of managing the organization and fulfilling a currently relevant vision.

Members are individuals and families. Juniors who are 18 and under are members within their family's membership. There are also business and fleet memberships.

The membership as a whole has ultimate say over club matters and meets at least annually to elect representatives, maintain the bylaws, and approve major decisions. The Board of Trustees, composed of elected Officers and Directors, meets at least monthly to oversee club operations and approve policy. The Officers, led by the Commodore as chief executive, execute the ongoing business of the club. Various committees are formed by the Board to carry out given responsibilities and events.

A lean crew of staff report to the Commodore. Our staff handle business operations to facilitate the members who make things happen. The number of staff is low to keep our dues low, and that means we should expect to pitch in extensively.

We have the club to do more of what we, as sailors, want to do together than we could on our own. The club is our platform to help us share our excellent sailing lifestyle with more people and do more with each other and for each other.



Clubhouse at Shilshole Bay Marina, Ballard

Photo: Tom Ringold

Club Programs

Racing

Corinthian sailors have been racing on Lake Washington at Leschi since our founding in 1945 and on Puget Sound out of Shilshole since before members built our clubhouse in 1969. We have heard that we run more races than any other private club in the country. Corinthian members are passionate about racing.

Evening racing on Lake Washington runs from mid-April through mid-September with J-24s racing on Tuesday and Thistles, San Juan 24s, and Thunderbirds racing on Wednesday. The Lake Fall Regatta follows the evening series for a weekend event out of Leschi. Additional fleets are welcome to form.

Evening racing on Puget Sound runs over the same period with keelboats racing on Wednesday and Star, Laser, RS Aero, Snipe, Tasar, 505, I-14 and other centerboard boats racing on Thursday. We offer the Center Sound Series mid-distances races in March and run several weekend buoy-racing regattas. Over the summer months, we also support casual racing on Friday nights off the breakwater.

Cruising

The Pacific Northwest is a world-class place to cruise and many of our members take part on cruises organized by volunteers. There are about a dozen events each year. Members with boats bring them and members without boats ship as crew. Former, current, and perhaps future racers all take part in cruising.

Youth Sailing

We've ramped up our youth sailing with the Summer Sail Camp providing education to as many as 140 juniors in conjunction with Sail Sand Point; intermediate to advanced clinics; Guppy sailing on summer Wednesdays evenings and Family Open Sailing Night on summer Fridays to introduce young families to the marine environment; and welcoming of the Sea Scouts of *S/V Yankee Clipper* into our club.

Education

Our members love to learn and share. Each year we run dozens of education events including the Rookie Rally (learn how to crew and race), pre-race strategy chalk talks, cruising presentations, first aid, US Sailing courses (race management, judging, safe powerboat handling), markset driver training, women's sailing clinics, and even volunteer bartender training.

Social

Getting people together on and off the water is probably the most rewarding value of the club. Leschi sailors get together after racing at the BluWater and at club-organized barbeques. Our Shilshole clubhouse is open to members Thursdays and Fridays year-round and after evening and weekend racing (over 100 nights a year). The bar is often run by volunteers and our \$6 dinners are expertly prepared by our private chef, serving over 5,000 dinners per year. Sometimes we're just open to hang out and other times we have a program, like live music, wine tastings, and sailing presentations by our members. Check the website calendar and join in.

Racing Calendar

JANUARY

- 10 Laser Frostbite 4
- 15 Annual Awards Party
- 30-31 Laser Frigid Digit Regatta

FEBRUARY

- 21 Laser Frostbite 5

MARCH

- 5 Blakely Rocks Race
- 6 Laser Frostbite 6
- 12 Scatchet Head Race
- 20 Laser Frostbite 7
- 26 Three Tree Point Race

APRIL

- 9-10 PSSR (Small Boat)
- 16-17 PSSR (Big Boat)
- 19-21 Spring Evening 1 (T,W,Th)
- 26-28 Spring Evening 2 (T,W,Th)

MAY

- 3-5 Spring Evening 3 (T, W, Th)
- 10-12 Spring Evening 4 (T, W, Th)
- 17-19 Spring Evening 5 (T, W, Th)
- 21-22 PNW One Design (POD) Regatta
- 24-26 Interim Evening 1 (T, W, Th)

JUNE

- 31-2 Interim Evening 2 (T, W, Th)
- 7-9 Interim Evening 3 (T, W, Th)
- 14-16 Interim Evening 4 (T, W, Th)
- 21-23 Interim Evening 5 (T, W, Th)
- 27 First Week of Jr Sail Camp
- 28-30 Summer Evening 1 (T, W, Th)

JULY

- 5-7 Summer Evening 2 (T, W, Th)
- 11-15 Whidbey Island Race Week
- 19-21 Summer Evening 3 (T, W, Th)
- 26-28 Summer Evening 4 (T, W, Th)

AUGUST

- 2-4 Summer Evening 5 (T, W, Th)
- 9-11 Summer Evening 6 (T, W, Th)
- 16-18 Fall Evening 1 (T, W, Th)
- 23-25 Fall Evening 2 (T, W, Th)
- 30-1 Fall Evening 3 (T, W, Th)

SEPTEMBER

- 6-8 Fall Evening 4 (T, W, Th)
- 13-15 Fall Evening 5 (T, W, Th)
- 17-18 Lake Fall Regatta
- 24-25 SSP/CYC Octoberfest

OCTOBER

- 8-9 PSSC (Big Boat)
- 15-16 PSSC (Small Boat)
- 28-30 SYC Grand Prix (@CYC)

NOVEMBER

- 19-20 Turkey Bowl
- 21 Annual Membership Meeting

DECEMBER

- 19 Monday Christmas Lunch
- TBD Christmas Ships Party

Race Registration

Registration

Online race registration is available at www.cycseattle.org.

Deadlines

Please register as early as possible to help build your fleet. Registrations must be submitted online or received at the club by close of business (normally 5 PM) on the entry deadline. The deadline is stated in the Notice of Race and is typically two days before the event. Registrations accepted at the discretion of the race committee after the deadline may be assessed a \$20 late fee.

Member Discount Packages

Various discount packages are available for members only (Adult/Family, Senior, Honorary Life, and Junior), as follows:

Lake Season's Pass (+ Sound Weekends). Good for all CYC races on Lake Washington, which includes the Spring, Interim, Summer, and Fall Evening series for either Tuesday or Wednesday night, plus the Lake Fall Regatta, plus all CYC Puget Sound weekend races. This is for you if you sail the weeknights, and you will achieve even more substantial discounts when you sail more. Your efforts to sail multiple venues are greatly appreciated by your fellow members!

Sound Season's Pass (+ Lake Weekends). Good for all CYC races on Puget Sound, which includes the Spring, Interim, Summer, and Fall Evening series for either Wednesday or Thursday night, plus Puget Sound weekend races, plus the Lake Fall Regatta. This is usually very worthwhile if you sail five or more events, such as the four weeknight series and one weekend, or three weeknight series and two weekends. Add even more sailing for no extra charge!

Packages are for a given owner and boat or, if you happen to change boats mid-season, for a type of boat that would continue to use the same package. For unique circumstances, contact the Fleet Captain Race.

Contact

For registration issues, please contact one of the following:

CYC Office

office@cycseattle.org
206-789-1919

CYC Fleet Captain Race

Matthew Wood
matthewewood@outlook.com

Entry Fees and Season's Passes

Lake Events

Tuesday/Wednesday Evening (1 of 4 series)*	<i>See calendar for dates</i>	\$150
Lake Fall Regatta	<i>Sept 17-18</i>	\$60

Sound Events

Center Sound Series		\$150
Blakely Rock Race	<i>March 5</i>	\$60
Scatchet Head Race	<i>March 12</i>	\$60
Three Tree Point Race	<i>March 26</i>	\$60
PSSR (Puget Sound Spring Regatta)	<i>Small: Apr 9-10 / Big: Apr 16-17</i>	
Keelboat		\$120
Centerboard (Double+)		\$60
Centerboard (Single)		\$40
Wednesday/Thursday Evening (1 of 4 series)	<i>See calendar for dates</i>	
Keelboat		\$150
Centerboard (Double+)		\$75
Centerboard (Single)		\$50
POD (Pacific NW One Design) Regatta	<i>May 21-22</i>	
Keelboat		\$120
Centerboard (Double+)		\$60
Centerboard (Single)		\$40
PSSC (Puget Sound Sailing Championship)	<i>Big: Oct 8-9 / Small: Oct 15-16</i>	
Keelboat		\$120
Centerboard (Double+)		\$60
Centerboard (Single)		\$40
SSP/CYC Octoberfest Youth Regatta	<i>Sept 24-25</i>	TBD
Turkey Bowl	<i>Nov 19-20</i>	
Centerboard (Double+)		\$60
Centerboard (Single)		\$40

Member Discount Packages*

Lake Season's Pass (+ Sound Weekends)		
Keelboat		\$500
Centerboard (Double+)		\$300
Centerboard (Single)		\$200
Sound Season's Pass (+ Lake Weekends)		
Keelboat		\$600
Centerboard (Double+)		\$300
Centerboard (Single)		\$200

* Members Only (Adult/Family, Senior, Honorary Life, and Junior).

Notices of Race – Lake Washington

Notice of Race Lake Tuesday/Wednesday Evening Series

Dates: There are four Tuesday series and four Wednesday series, as follows:

	<u>Tuesday Series</u>	<u>Wednesday Series</u>
Spring Series:	Apr 19, 26, May 3, 10, 17	Apr 20, 27, May 4, 11, 18
Interim Series:	May 24, 31, Jun 7, 14, 21	May 25, Jun 1, 8, 15, 22
Summer Series:	Jun 28, Jul 5, 19, 26, Aug 2, 9	Jun 29, Jul 6, 20, 27, Aug 3, 10
Fall Series:	Aug 16, 23, 30, Sep 6, 13	Aug 17, 24, 31, Sep 7, 14

Eligibility: Open for CYC Adult/Family, Senior, Honorary Life, and Junior members. Prospective members may race in these series for up to 12 months.

Classes:

Tuesdays:	J/24
Wednesdays:	Thunderbird, San Juan 24, Thistle, and other small keelboat and centerboard classes with at least five boats may apply.

Location: Lake Washington off Leschi.

Schedule:

1715 – 1745	Practice starts (when available)
1745	First warning signal (April and May dates only)
1800	First warning signal (June onward)

The race committee intends to conclude racing no later than a time that will permit boats to return to Leschi Marina before dark.

Course: Courses will typically be windward / leeward and may include gates, offsets, and gybe marks. A target of at least two and up to four races may be sailed each day with a typical race duration of 20 to 60 minutes.

Scoring: A boat's series score will be the total of her race scores, except that a boat's worst score will be excluded if at least four races are completed, two scores will be excluded if at least seven races are completed, and three scores will be excluded if at least ten races are completed. This changes RRS A2. One race will constitute a series.

Time Limit: 90 minutes for the first boat in class and for other boats 30 minutes after the first boat that sails the course.

Other Provisions:

- Notice of Race amended by CYC Notice of Race Addendum.

Awards: 1st, 2nd, and 3rd in class for each series.

Registration Fee: \$150 per series (members, see Member Discount Packages)

Registration Deadline: Monday before the start of each series.

Notice of Race Lake Fall Regatta

Date: September 17, 2016 (Saturday)

Location: Lake Washington off Leschi.

Classes: J/24, Thunderbird, San Juan 24, Thistle, Snipe, Etchells, and other small keelboat and centerboard classes with at least five boats may apply.

Schedule:

Saturday

0900 – 0930	Late check in
0930 – 0945	Competitor's briefing
1015 – 1045	Practice starts (when available)
1100	First warning signal
1600	No warning signal after this time
After racing	Social gathering at regatta site

Courses: Courses will typically be windward / leeward and may include gates, offsets, and gybe marks. A target of at least four and up to six races may be sailed each day with typical race duration of 20 to 60 minutes.

Scoring: A boat's series score will be the total of her race scores, except that a boat's worst score will be excluded if six or more races are completed. This changes RRS A2. One race will constitute a series.

Time Limit: 90 minutes for the first boat in class and for other boats 30 minutes after the first boat that sails the course.

Other Provisions:

- Notice of Race amended by CYC Notice of Race Addendum.

Awards: 1st, 2nd, and 3rd in class.

Registration Fee: \$50

Registration Deadline: September 15, 2016 (Thursday)

Notices of Race – Puget Sound

Notice of Race Center Sound Series

The Center Sound Series is a series of the following events:

Blakely Rock Race	March 5, 2016 (Saturday)
Scatchet Head Race	March 12, 2016 (Saturday)
Three Tree Point Race	March 26, 2016 (Saturday)

Classes: PHRF-NW and IRC. Other classes of at least five boats may apply. Monohull, multihull, and casual class boats will race in separate classes.

Scoring: Boats will be scored in class and overall. A boat's series score will be the total of her race scores with no scores excluded. This changes RRS A2. One race will constitute a series.

Other Provisions:

- Notice of Race amended by CYC Notice of Race Addendum.

Awards:

Each Race: 1st, 2nd, and 3rd in class.

Series: 1st overall per course and 1st, 2nd, 3rd in class.

Permanent Trophies: Permanent trophies will be awarded at the CYC Annual Party for race classes overall by race and racing classes series overall (Werner Ohmes Fog Horn Trophy). The Werner Ohmes Fog Horn Trophy is awarded to the boat with the highest score calculated as follows: A boat's score for a race is $100 (N + 1 - P) / (N + 1)$ points, where P is her place in her class in that race and N is the number of starters in her class in that race; a boat that does not finish scores $(66) / (N + 1)$ points, a disqualified boat scores $(33) / (N + 1)$ points, and a boat that does not start scores 0 points; a boat's series score is the sum of her score in all races in the series.

Registration Fee: \$150 for Center Sound Series (or \$60 per race). Boats that register per race will be scored in the series for the races entered. Members, see Member Discount Packages.

Registration Deadline: March 3, 2016 (Thursday)

Moorage: Guest moorage is available at Shilshole Bay Marina. To make arrangements, call the marina office at VHF 17, 206-787-3006, or 206-601-4089 (after hours). Moorage fees are based on boat length and services.

For more information, see the Notices of Race for each race in the series.

Notice of Race

Center Sound Series: Blakely Rock Race

Date: March 5, 2016 (Saturday)

Location: Puget Sound, starting and finishing lines in Shilshole Bay.

Classes: PHRF-NW and IRC. Other classes of at least five boats may apply. Monohull, multihull, and casual class boats will race in separate classes.

Schedule:

Saturday

1000	First warning signal
1400	No warning signal after this time
After racing	Party at clubhouse

Course (Racing Classes):

North Wind: Start by leaving the starting mark buoy to port, round mark “N” to port, round mark “K” to port, and finish by leaving the finishing mark buoy to port. Course distance ~ 21 NM.

South Wind: Start by leaving the starting mark buoy to starboard, round mark “K” to starboard, round mark “N” to starboard, and finish by leaving the finishing mark buoy to starboard. Course distance ~ 21 NM.

Course (Casual Classes):

North Wind: Start by leaving the starting mark buoy to port, round mark “N” to port, round mark “W” to port, and finish by leaving the finishing mark buoy to port. Course distance ~ 12 NM.

South Wind: Start by leaving the starting mark buoy to starboard, round mark “W” to starboard, round mark “N” to starboard, and finish by leaving the finishing mark buoy to starboard. Course distance ~ 12 NM.

Time Limit: 8 hours for the first boat in class and for other boats the later of 8 hours or 1 hour after of the first boat that sails the course.

Other Provisions:

- Notice of Race amended by CYC Notice of Race Addendum.
- Boats must comply with equipment requirement category USSER Nearshore, as amended.
- This race is part of the CYC Center Sound Series.

Awards: For the race, 1st, 2nd, and 3rd in class. Party and awards at the CYC clubhouse after racing. For the Center Sound Series, see awards for the Three Tree Point Race.

Registration Fee: \$60 (or \$150 for Center Sound Series)

Registration Deadline: March 3, 2016 (Thursday)

Notice of Race

Center Sound Series: Scatchet Head Race

Date: March 12, 2016 (Saturday)

Location: Puget Sound, starting and finishing lines in Shilshole Bay.

Classes: PHRF-NW and IRC. Other classes of at least five boats may apply. Monohull, multihull, and casual class boats will race in separate classes.

Schedule:

Saturday

1000	First warning signal
1400	No warning signal after this time
After racing	Party at clubhouse

Course (Racing Classes):

Start by leaving the starting mark buoy to port, round Scatchet Head Lighted Gong Buoy (LL#16555) to port, and finish by leaving the finishing mark buoy to port. Course distance ~ 26 NM.

Course (Casual Classes):

Start by leaving the starting mark buoy to port, round mark "U" to port, and finish by leaving the finishing mark buoy to port. Course distance ~ 7 NM.

Time Limit: 9 hours for the first boat in class and for other boats the later of 9 hours or 1 hour after of the first boat that sails the course.

Other Provisions:

- Notice of Race amended by CYC Notice of Race Addendum.
- Boats must comply with equipment requirement category USSER Nearshore, as amended.
- This race is part of the CYC Center Sound Series.

Awards: For the race, 1st, 2nd, and 3rd in class. Party and awards at the CYC clubhouse after racing. For the Center Sound Series, see awards for the Three Tree Point Race.

Registration Fee: \$60 (or \$150 for Center Sound Series)

Registration Deadline: March 10, 2016 (Thursday)

Notice of Race

Center Sound Series: Three Tree Point Race

Date: March 26, 2016 (Saturday)

Location: Puget Sound, starting and finishing lines in Shilshole Bay.

Classes: PHRF-NW and IRC. Other classes of at least five boats may apply. Monohull, multihull, and casual class boats will race in separate classes.

Schedule:

Saturday

1000	First warning signal
1400	No warning signal after this time
After racing	Party at clubhouse

Course (Racing Classes):

Start by leaving the starting mark buoy to port, round the TTPYC Racing Buoy C to starboard, and finish by leaving the finishing mark buoy to port. The TTPYC Racing Buoy C is a white, 6 inch diameter cylinder rising 8 feet above the water located approximately 1000 feet SE of the Three Tree Point Light. Course distance ~ 30 NM.

Course (Casual Classes):

Start by leaving the starting mark buoy to port, round mark "D" to port, and finish by leaving the finishing mark buoy to port. Course distance ~ 12 NM.

Time Limit: 9 hours for the first boat in class and for other boats the later of 9 hours or 1 hour after of the first boat that sails the course.

Other Provisions:

- Notice of Race amended by CYC Notice of Race Addendum,
- Boats must comply with equipment requirement category USSER Nearshore, as amended.
- This race is part of the CYC Center Sound Series.

Awards: For the race, 1st, 2nd, and 3rd in class. Party and awards at the CYC clubhouse after racing. Awards for the Center Sound Series will be presented after this race.

Registration Fee: \$60 (or \$150 for Center Sound Series)

Registration Deadline: March 24, 2016 (Thursday)

Notice of Race

Puget Sound Spring Regatta (Small Boat)

Date: April 9-10, 2016 (Saturday and Sunday)

Location: Puget Sound off Shilshole.

Classes: Optimist, Laser, RS Aero, Snipe, Tasar, Thistle, Star, 505, I-14, F18, J/24, and other small keelboat and centerboard classes with at least five boats may apply.

Schedule:

Saturday

0900 – 0930	Late check in
0930 – 0945	Competitor's briefing
1015 – 1045	Practice starts (when available)
1100	First warning signal
After racing	Party at clubhouse

Sunday

1015 – 1045	Practice starts (when available)
1100	First warning signal
1600	No warning signal after this time
After racing	Awards party at clubhouse

Courses: Courses will typically be windward / leeward and may include gates, offsets, and gybe marks. A target of at least four and up to six races may be sailed each day with a typical race duration of 20 to 60 minutes.

Scoring: A boat's series score will be the total of her race scores, except that a boat's worst score will be excluded if six or more races are completed. This changes RRS A2. One race will constitute a series.

Time Limit: 90 minutes for the first boat in class and for other boats 30 minutes after the first boat that sails the course.

Other Provisions:

- Notice of Race amended by CYC Notice of Race Addendum.

Awards: 1st, 2nd, and 3rd in class.

Registration Fee:

Keelboat	\$120
Centerboard (Double+)	\$60
Centerboard (Single)	\$40

Registration Deadline: April 7, 2016 (Thursday)

Guest Moorage and Dry Storage: The Shilshole Marina north parking lot adjacent to the dry storage area will be available for guest dry storage. A limited amount of included guest moorage will be available between piers W and X.

Notice of Race

Puget Sound Spring Regatta (Big Boat)

Date: April 16-17, 2016 (Saturday and Sunday)

Location: Puget Sound off Shilshole.

Classes: PHRF-NW, IRC, Farr 30, J/105, Melges 24, J/80, Thunderbird, San Juan 24, and other keelboat classes with at least five boats may apply.

Schedule:

Saturday

0900 – 0930	Late check in
0930 – 0945	Competitor's briefing
1015 – 1045	Practice starts (when available)
1100	First warning signal
After racing	Party at clubhouse

Sunday

1015 – 1045	Practice starts (when available)
1100	First warning signal
1600	No warning signal after this time
After racing	Awards party at clubhouse

Courses: Courses will typically be windward / leeward and may include gates, offsets, and gybe marks. A target of at least four and up to six races may be sailed each day with a typical race duration of 20 to 60 minutes.

Scoring: A boat's series score will be the total of her race scores, except that a boat's worst score will be excluded if six or more races are completed. This changes RRS A2. One race will constitute a series.

Time Limit: 90 minutes for the first boat in class and for other boats 30 minutes after the first boat that sails the course.

Other Provisions:

- Notice of Race amended by CYC Notice of Race Addendum.
- Keelboats racing in handicap classes must comply with equipment requirement category USSER Nearshore, as amended. These requirements do not apply to boats racing in one design classes.

Awards: 1st, 2nd, and 3rd in class.

Registration Fee:

Keelboat	\$120
----------	-------

Registration Deadline: April 14, 2016 (Thursday)

Guest Moorage and Dry Storage: The Shilshole Marina north parking lot adjacent to the dry storage area will be available for guest dry storage. A limited amount of included guest moorage will be available between piers W and X.

Notice of Race

Sound Wednesday/Thursday Evening Series

Dates: There are four Wednesday series and four Thursday series, as follows:

	<u>Wednesday Series</u>	<u>Thursday Series</u>
Spring Series:	Apr 20, 27, May 4, 11, 18	Apr 21, 28, May 5, 12, 19
Interim Series:	May 25, Jun 1, 8, 15, 22	May 26, Jun 2, 9, 16, 23
Summer Series:	Jun 29, Jul 6, 20, 27, Aug 3, 10	Jun 30, Jul 7, 21, 28, Aug 4, 11
Fall Series:	Aug 17, 24, 31, Sep 7, 14	Aug 18, 25, Sep 1, 8, 15

Location: Puget Sound off Shilshole.

Classes:

Wednesdays:	PHRF-NW, IRC, Farr 30, J/105, Melges 24, J/80, and other keelboat classes with at least five boats may apply.
Thursdays:	Laser, RS Aero, Snipe, Tasar, Star, 505, I-14, and other small keelboat and centerboard classes with at least five boats may apply.

Schedule:

1730 – 1800	Practice starts (when available)
1815	First warning signal
Sunset	No warning signal after this time
After racing	Dinner at clubhouse

Course: Courses will typically be windward / leeward and may include gates, offsets, and gybe marks. A target of at least two and up to four races may be sailed each day with a typical race duration of 20 to 60 minutes.

Scoring: A boat's series score will be the total of her race scores, except that a boat's worst score will be excluded if six or more races are completed. This changes RRS A2. One race will constitute a series.

Time Limit: 90 minutes for the first boat in class and for other boats 30 minutes after the first boat that sails the course.

Other Provisions:

- Notice of Race amended by CYC Notice of Race Addendum.

Awards: 1st, 2nd, and 3rd in class for each series.

Registration Fee:

Keelboat	\$150
Centerboard (Double+)	\$75
Centerboard (Single)	\$50

Registration Deadline: Monday before the start of each series.

Notice of Race

Pacific Northwest One Design (POD) Regatta

Date: May 21-22, 2016 (Saturday and Sunday)

Location: Puget Sound off Shilshole.

Classes: Level PHRF-NW and IRC, Farr 30, J/105, Melges 24, J/24, Thunderbird, San Juan 24, Optimist, Laser, RS Aero, Snipe, Tasar, Thistle, Star, 505, I-14, F18, and other small keelboat and centerboard classes with at least five boats may apply.

Schedule:

Saturday

0900 – 0930	Late check in
0930 – 0945	Competitor's briefing
1015 – 1045	Practice starts (when available)
1100	First warning signal
After racing	Party at clubhouse

Sunday

1015 – 1045	Practice starts (when available)
1100	First warning signal
1600	No warning signal after this time
After racing	Awards party at clubhouse

Courses: Courses will typically be windward / leeward and may include gates, offsets, and gybe marks. A target of at least four and up to six races may be sailed each day with a typical race duration of 20 to 60 minutes.

Scoring: A boat's series score will be the total of her race scores, except that a boat's worst score will be excluded if six or more races are completed. This changes RRS A2. One race will constitute a series.

Time Limit: 90 minutes for the first boat in class and for other boats 30 minutes after the first boat that sails the course.

Other Provisions:

- Notice of Race amended by CYC Notice of Race Addendum.
- Keelboats racing in handicap classes must comply with equipment requirement category USSER Nearshore, as amended. These requirements do not apply to boats racing in one design classes.

Awards: 1st, 2nd, and 3rd in class.

Registration Fee:

Keelboat	\$120
Centerboard (Double+)	\$60
Centerboard (Single)	\$40

Registration Deadline: May 19, 2016 (Thursday)

Guest Moorage and Dry Storage: The Shilshole Marina north parking lot adjacent to the dry storage area will be available for guest dry storage. A limited amount of included guest moorage will be available between piers W and X.

Race Information

SSP/CYC Octoberfest Youth Regatta

Sail Sand Point and Corinthian Yacht Club of Seattle host this two-day junior regatta on Lake Washington. This regatta is part of the NW Youth Racing Circuit.

Dates: September 24-25, 2016 (Saturday and Sunday)

Location: Lake Washington off Sail Sand Point.

Classes: Optimist, Laser Radial, Laser, FJ, 29er, and other centerboard classes with at least five boats may apply.

Notice of Race

Date: October 8-9, 2016 (Saturday and Sunday)

Location: Puget Sound off Shilshole.

Classes: PHRF-NW, IRC, Farr 30, J/105, Melges 24, J/80, Thunderbird, San Juan 24, and other keelboat classes with at least five boats may apply.

Schedule:

Saturday

0900 – 0930	Late check in
0930 – 0945	Competitor's briefing
1015 – 1045	Practice starts (when available)
1100	First warning signal
After racing	Party at clubhouse

Sunday

1015 – 1045	Practice starts (when available)
1100	First warning signal
1600	No warning signal after this time
After racing	Awards party at clubhouse

Courses: Courses will typically be windward / leeward and may include gates, offsets, and gybe marks. A target of at least four and up to six races may be sailed each day with a typical race duration of 20 to 60 minutes.

Scoring: A boat's series score will be the total of her race scores with no scores excluded. This changes RRS A2. One race will constitute a series.

Time Limit: 90 minutes for the first boat in class and for other boats 30 minutes after the first boat that sails the course.

Other Provisions:

- Notice of Race amended by CYC Notice of Race Addendum.
- Keelboats racing in handicap classes must comply with equipment requirement category USSER Nearshore, as amended. These requirements do not apply to boats racing in one design classes.

Awards: 1st, 2nd, and 3rd in class.

Registration Fee:

Keelboat	\$120
----------	-------

Registration Deadline: October 6, 2016 (Thursday)

Notice of Race

Puget Sound Sailing Championship (Small Boat)

Date: October 15-16, 2016 (Saturday and Sunday)

Location: Puget Sound off Shilshole.

Classes: Optimist, Laser, RS Aero, Snipe, Tasar, Thistle, Star, 505, I-14, F18, J/24, and other small keelboat and centerboard classes with at least five boats may apply.

Schedule:

Saturday

0900 – 0930	Late check in
0930 – 0945	Competitor's briefing
1015 – 1045	Practice starts (when available)
1100	First warning signal
After racing	Party at clubhouse

Sunday

1015 – 1045	Practice starts (when available)
1100	First warning signal
1600	No warning signal after this time
After racing	Awards party at clubhouse

Courses: Courses will typically be windward / leeward and may include gates, offsets, and gybe marks. A target of at least four and up to six races may be sailed each day with a typical race duration of 20 to 60 minutes.

Scoring: A boat's series score will be the total of her race scores with no scores excluded. This changes RRS A2. One race will constitute a series.

Time Limit: 90 minutes for the first boat in class and for other boats 30 minutes after the first boat that sails the course.

Other Provisions:

- Notice of Race amended by CYC Notice of Race Addendum.

Awards: 1st, 2nd, and 3rd in class.

Registration Fee:

Keelboat	\$120
Centerboard (Double+)	\$60
Centerboard (Single)	\$40

Registration Deadline: October 13, 2016 (Thursday)

Notice of Race Turkey Bowl

Date: November 19-20, 2016 (Saturday and Sunday)

Location: Puget Sound off Shilshole.

Classes: Optimist, Laser, RS Aero, Snipe, Tasar, Thistle, Star, 505, I-14, F18, and other small keelboat and centerboard classes with at least five boats may apply.

Schedule:

Saturday

0900 – 0930	Late check in
0930 – 0945	Competitor's briefing
1015 – 1045	Practice starts (when available)
1100	First warning signal
After racing	Party at clubhouse

Sunday

1015 – 1045	Practice starts (when available)
1100	First warning signal
1600	No warning signal after this time
After racing	Awards party at clubhouse

Courses: Courses will typically be windward / leeward and may include gates, offsets, and gybe marks. A target of at least four and up to six races may be sailed each day with a typical race duration of 20 to 60 minutes

Scoring: A boat's series score will be the total of her race scores, except that a boat's worst score will be excluded if six or more races are completed. This changes RRS A2. One race will constitute a series.

Time Limit: 90 minutes for the first boat in class and for other boats 30 minutes after the first boat that sails the course.

Other Provisions:

- Notice of Race amended by CYC Notice of Race Addendum.

Awards: 1st, 2nd, and 3rd in class.

Registration Fee:

Centerboard (Double+)	\$60
Centerboard (Single)	\$40

Registration Deadline: November 17, 2016 (Thursday)

Appendix

CYC Notice of Race Addendum

The CYC Notice of Race Addendum is common language that a particular Notice of Race may specifically incorporate.

The organizing authority is the Corinthian Yacht Club of Seattle (CYC).

1 Rules

- 1.1 This regatta will be governed by the rules as defined in the Racing Rules of Sailing (RRS).
- 1.2 US Sailing prescriptions to the following rules apply: RRS 34, 40, 48.1, 56, 60, 61.4, 63.2, 63.4, 64.3(b), 67, 70.5(a), 76.1, 82, 86.3, 88.2, Appendix G and R. Inclusion of additional US Sailing prescriptions may be noted elsewhere in the Notice of Race or Sailing Instructions. US Sailing prescriptions are available at www.ussailing.org.
- 1.3 Other changes to the rules may be noted elsewhere in the Notice of Race or Sailing Instructions. If the Notice of Race and Sailing Instructions are in conflict, the Sailing Instructions have precedence.
- 1.4 Prior to the publication of the Sailing Instructions, changes to the Notice of Race will be available on the CYC website at www.cycseattle.org. After the publication of the Sailing Instructions, changes to the Notice of Race will be available on the official notice board described in the Sailing Instructions.

2 Eligibility and Entry

- 2.1 Entrants must register online at www.cycseattle.org, or by form delivered to CYC, and pay appropriate fees by the registration deadline. Registration after the deadline may be accepted at the discretion of the organizing authority and may require an additional late fee.
- 2.2 Boats must be insured with valid third-party liability insurance with coverage of at least \$300,000 per incident.
- 2.3 A boat wishing to use sails with identification different from her own must receive permission from the organizing authority by the registration deadline or when her late registration is accepted. This changes RRS 77.
- 2.4 A boat racing in a handicap class must ensure that her correct rating is issued and recorded by the class organization by the registration deadline or when her late registration is accepted. Boats participating without a valid class certificate will not be entered or scored and her entry fee may not be refunded. A change in a boat's handicap class rating will take effect on the day it is recorded by the class organization. Changes are not retroactive. When a boat's rating changes between races that are part of a series, the boat remains in the same class in which she started the series.
- 2.5 A boat rated by her handicap class in consideration of water ballast may use water ballast as rated. This changes RRS 51.

3 Operating and Equipment Requirements

- 3.1 Sailing is an activity that has an inherent risk of damage and injury. Competitors in this event are participating entirely at their own risk. See RRS 4, Decision to Race. The responsibility for a boat's decision to participate in a race or to continue racing is hers alone. The race organizers (organizing authority, race committee, protest committee, host club, sponsors, or any other organization or official) will not be responsible for damage to any boat or other property or the injury to any competitor, including death, sustained as a result of participation in this event. By participating in this event, each competitor agrees to release the race organizers from any and all liability associated with such competitor's participation in this event to the fullest extent permitted by law.
- 3.2 For centerboard boats, competitors must wear personal floatation devices, as in RRS 40, and, for regattas November through March, must also wear a wetsuit or drysuit. These requirements apply while on the water except briefly while changing or adjusting clothing or personal equipment.
- 3.3 Boats designated in the applicable Notice of Race must comply with the equipment requirements of *US Sailing US Safety Equipment Requirements* (USSER), according to the category requirement identified, if any, in the Notice of Race. The text of these regulations is available from the US Sailing website at offshore.ussailing.org. The following changes apply to USSER Nearshore:
- (a) USSER 2.4 required, except for boats under 9 meters or boats under 12 meters with crew position inboard except briefly to perform a necessary task. For boats that do not meet USSER 2.4, crew must wear personal floatation devices, as in RRS 40, while on the water except briefly while changing or adjusting clothing or personal equipment.
 - (b) USSER 2.7.2 required.
 - (c) USSER 3.7.2 required, "a man overboard pole and flag, with a lifebuoy" changed to "a lifebuoy", light required from sunset to sunrise.
 - (d) USSER 3.8.2 may be satisfied by USSER 3.8.1. USSER 3.8.1 "a masthead antenna" changed to "an antenna".
 - (e) USSER 3.22 required.
 - (f) USSER 3.26 required.
- 3.4 Keelboats must comply with safety regulations identified in US Coast Guard publication *A Boater's Guide to the Federal Requirements for Recreational Boats*, available at www.uscgboating.org/fedreqs/default.html, concerning life jackets (33 CFR 175 Subpart B), visual distress signals (33 CFR 175 Subpart C), fire extinguishers (46 CFR 25.30), sound producing devices (33 CFR 83 Subpart D), and navigation lights (33 CFR 83 Subpart C).
- 3.5 The race committee may inspect a boat at any time before or after racing for compliance with requirements.
- 3.6 Penalties under CYC Notice of Race Addendum 3 may be less than disqualification. This changes RRS 64.1.

4 Scoring

- 4.1 The time limit is the maximum allowable time from a boat's starting signal to her finish time or a time of day. A boat that does not finish within the time limit will be scored Did Not Finish (DNF). This changes RRS 35.

- 4.2 A boat that did not start (OCS), did not finish (DNF), retired (RET), or is disqualified (DSQ, DNE, DGM, BFD) will be scored for the finishing place one more than the number boats starting and finishing and not thereafter retiring or being disqualified. A boat that did not start (DNC, DNS) will be scored for the finishing place two more than the number of boats starting and finishing and not thereafter retiring or being disqualified. This changes RRS A4.2. RRS A9 is deleted.
- 4.3 Corrected times for PHRF-NW handicap classes will be calculated using the Time on Distance method.
- 5 Sailing Instructions
- 5.1 Sailing Instructions will be available two days before the regatta on the CYC website at www.cycseattle.org or, if not available on the website, on the notice board at the CYC clubhouse.

Puget Sound Sailboat Safety Regulations

2014 Revision as adopted by Shilshole Bay Yacht Club, Sloop Tavern Yacht Club, Corinthian Yacht Club of Seattle, and Seattle Yacht Club

We must share Puget Sound with its commercial traffic, including many deep-water vessels and tows. It is sobering to note that, if your boat is one mile dead-ahead of a freighter coming down the Sound at normal speed, and the freighter's helm is put hard over to avoid you, the freighter's bow will miss you, but her stern will not! Obviously, this implies that early and decisive action is required to keep your boat out of the path of a large oncoming vessel or tow. The requirements of this document may be incorporated into an event by reference in a notice of race.

1. Yachts must not sail across a tow line, too close ahead, or too close alongside of commercial traffic. Deep water vessels have limited ability to change course and speed. Barges under tow can yaw unexpectedly well out to the side at speeds essentially the same as they are being towed. Yachts should not pass less than one mile ahead and 1/4 mile to the side of large vessels.
2. Rule 10 of the International and Inland Rules to Prevent Collisions at Sea (COLREGS) requires that no power-driven vessel less than 20 meters (66 feet) in length, and no sailing vessel (of any size) may impede the safe passage of a power-driven vessel following a Vessel Traffic System (VTS) Lane.
3. Rule 9 of the COLREGS requires that no power vessel of less than 20 meters (66 feet) in length and no sailing vessel (of any length) shall impede the safe passage of any vessel which can navigate only within a narrow channel or fairway. Puget Sound can be considered a "narrow channel" for most large commercial traffic. "Impede" means to cause to alter speed or course or to take evasive action.
4. A yacht in position where it may impede commercial traffic must exit from the "danger area" immediately, under auxiliary power if necessary. If power is used, it must be reported to the Race Committee at the finish line. Also, a written report must be made on a protest form, showing the location, time, duration of power use, speed, direction of exit, and that the competitive position of the yacht was not improved. If the last item cannot be demonstrated adequately, a time penalty may be imposed.
5. Navigation lights must be shown between sunset and sunrise as required by the International Rules of the Road.
6. Observed and/or reported violations of the safety regulations may be protested. The Race Committee shall have the option of issuing a "warning" when deemed appropriate. Warnings are recorded and may be considered when judging any future reports.

US Coast Guard Warning

The following information was provided by the US Coast Guard.

Do not approach within 100 yards of any Navy Vessel, Washington State Ferry, or Ship. If you need to pass within 100 yards of these vessels in order to ensure a safe passage in accordance with the Navigation Rules, you must contact the ship on VHF-FM channel 16 or 13. (33 CFR 165.2030, 165.1317, 165.1313)

You must operate at minimum speed within 500 yards of any of these vessel types.



Violations of these Security Zones are a felony offense, punishable by up to 6 years in prison and/or up to \$250,000 in fines.

Contacts

Leadership Team

Commodore	Jerry Diercks	jerrydiercks1@gmail.com
Vice Commodore	Denny Vaughan	vaughangd@aol.com
Rear Commodore	Paul Kalina	paulkalina@hotmail.com
Jr. Staff Commodore	Stuart Burnell	stuartburnell@outlook.com
Secretary	Mike Taft	tuekaze@gmail.com
Treasurer	Chris Pittack	chrispit@yahoo.com
Fleet Captain Race	Matthew Wood	matthewewood@outlook.com
Fleet Captain Cruise	Peggy Watt	peggywatt09@gmail.com
Director	Kerry Billingham	kbilling50@yahoo.com
Director	Lauren Buchholtz	buchhla@gmail.com
Director	Lisa Cole	lmariecole@gmail.com
Director	Wanda Creitz	wanda28@hotmail.com
Director	Liesl Mordhorst	lieslmordhorst@gmail.com
Director	Langley Sears	lvamburn@gmail.com

Race Organization Contacts

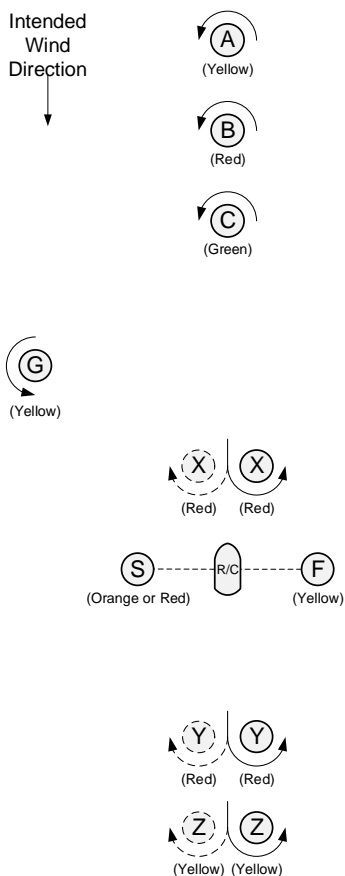
Fleet Captain Race	Matthew Wood	matthewewood@outlook.com
Lake Protest Chair	Wayne Balsiger	webalsiger@comcast.net
Sound Protest Chair	Jared Hickman	jared@celebrationboatworks.com
PHRF Handicapper	Matthew Wood	matthewewood@outlook.com

Business and Race Management Staff

Operations Manager	Beth Sowa <i>Social, Food & Bev, Sponsorship, Finance, HR</i>	office@cycseattle.org 206-789-1919
Operations Manager	Celeste Benson <i>Racing, Membership, Jr. Sailing, Communications</i>	office@cycseattle.org 206-789-1919
Principle Race Officer	Kevin Cunningham	kevinc_cyc@yahoo.com
Principle Race Officer	Charley Rathkopf	charley-cyc@rathkopf.org

Buoy Course Marks (relative positions)

This is a typical configuration. Please note that the Sailing Instructions for a particular regatta may use modified or different mark descriptions.

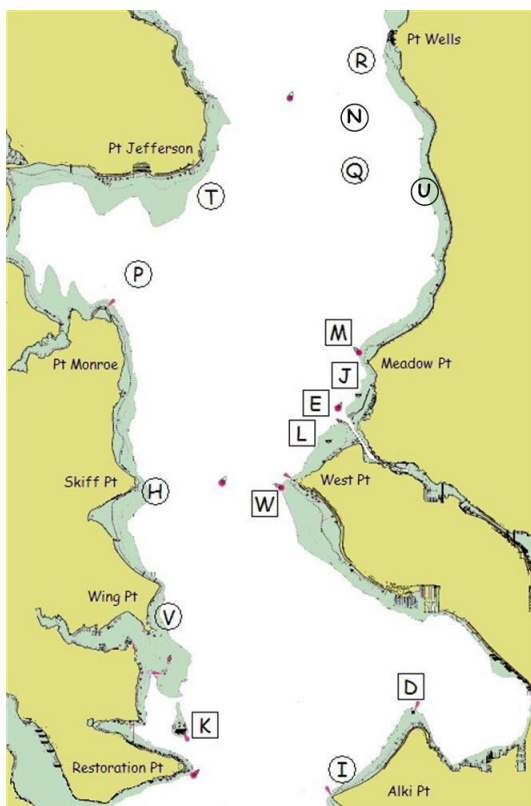


The course diagram for buoy course marks shows the general orientation of the race committee signal boat ("R/C"), other marks (identified by the letters S, A, B, C, G, X, Y, Z and F), and the intended wind direction. All buoy course marks other than the race committee signal boat are inflatable buoys. Positions are approximate and the diagram is not to scale.

Notes:

- S When a starting mark for a downwind start, may be on either side of the race committee signal boat.

Puget Sound Geographic Marks (fixed positions)



Bearings are magnetic. Distances are nautical miles (NM). Bearings, distances, and positions are approximate. Each temporary mark is shown with its label in a circle. Each permanent mark is near its label in a square box.

- D Duwamish Head Lt. (LL #16910)
- E Shilshole Bay Entrance Lighted Buoy G "1" (LL #18125)
- H Temporary mark 0.3 NM E of Skiff Pt.
- I Temporary mark 0.5 NM N of Alki Pt.
- J Shilshole Bay ACOE N Mooring Buoy 0.25 NM SSW of N entrance
- K Blakely Rock (LL #16830)
- L Shilshole Bay ACOE S Mooring Buoy 0.5 NM SW of S entrance
- M Meadow Pt. Buoy (LL #16765)
- N Temporary mark 1.0 NM E of Traffic Separation Lane Lighted Buoy SF (LL #16745)
- P Temporary mark 0.5 NM NNE of Pt. Monroe
- Q Temporary mark 3.0 NM bearing 340° from Meadow Pt. Buoy
- R Temporary mark 0.5 NM SW of Pt. Wells
- T Temporary mark 0.5 NM SE of Pt. Jefferson
- U White spar buoy 2.9 NM bearing 6° from Meadow Pt. Buoy at 47° 44.4N, 122° 22.95W
- V Temporary mark 0.3 NM NNE of Wing Pt.
- W West Pt. Buoy (LL #16805)

CYC Business Members

These businesses are corporate members of Corinthian Yacht Club. Please thank them for their support and involvement in sailing.





Sharing the Sailing Community



Clubhouse at Shilshole Bay Marina, Ballard

Photo: Tom Ringold

Because you love sailing, please consider joining the Corinthian Yacht Club of Seattle. We need all the people who enjoy the club to sign up and be a part of supporting our community through our organization. Many of our members continue to be members of other clubs, each supporting our sport in their own way. Even if you don't happen to own a boat, you can own our yacht club and claim your equal stake and influence in supporting our sailing way of life through the club. The Adult/Family membership is just \$35 a month. Please talk with your friends who are members about joining.

7755 Seaview Ave NW, Pier V
Seattle, Washington 98117

www.cycseattle.org • 206.789.1919 • office@cycseattle.org