

# **CORINTHIAN YACHT CLUB OF SEATTLE**



## **2013 RACE BOOK**

# **CORINTHIAN YACHT CLUB OF SEATTLE**

## **SHILSHOLE CLUBHOUSE**

7755 Seaview Ave. NW, Pier V  
Seattle, WA 98117

Phone: (206) 789-1919  
Fax: (206) 789-5896

E-mail address: [office@cycseattle.org](mailto:office@cycseattle.org)  
Website: [www.cycseattle.org](http://www.cycseattle.org)

Office Hrs: Monday – Friday  
1200 – 1700 (closed Tuesday)

## **2013 YACHT CLUB OFFICERS**

Commodore  
Vice Commodore  
Rear Commodore  
Junior Staff Commodore  
Secretary  
Treasurer

Bruce Van Deventer  
Brian Watkins  
Stuart Burnell  
Ken Johnson  
Wanda Creitz  
Chris Pittack

[bruce.vandeventer@gmail.com](mailto:bruce.vandeventer@gmail.com)  
[brian.watkins.cyc@live.com](mailto:brian.watkins.cyc@live.com)  
[smburnell@yahoo.com](mailto:smburnell@yahoo.com)  
[kenneth.johnson4@comcast.net](mailto:kenneth.johnson4@comcast.net)  
[wanda28@hotmail.com](mailto:wanda28@hotmail.com)  
[chrispit@yahoo.com](mailto:chrispit@yahoo.com)

## **2013 YACHT CLUB DIRECTORS**

Sunny Fenton  
Derick Vranizan  
Michele Rogalin  
Derek DeCouteau  
Kirk Utter

[membership@cycseattle.org](mailto:membership@cycseattle.org)  
[fwvranizan@gmail.com](mailto:fwvranizan@gmail.com)  
[Michele.rogalin.cyc@gmail.com](mailto:Michele.rogalin.cyc@gmail.com)  
[ddecouteau@yahoo.com](mailto:ddecouteau@yahoo.com)  
[kirk@remotesatellite.com](mailto:kirk@remotesatellite.com)

## **2013 SAILING PROGRAM OFFICERS**

Race Fleet Captain  
Cruise Fleet Captain

Bill Blodgett  
Doug Stewart

[racefleetcaptain@cycseattle.org](mailto:racefleetcaptain@cycseattle.org)  
[douglaskstewart@comcast.net](mailto:douglaskstewart@comcast.net)

## **COUNCIL CHAIRS**

Lake Fleet Council

Remmert Wolters

[rwolters@axiom-northwest.com](mailto:rwolters@axiom-northwest.com)

## **PROTEST CHAIRS**

Lake Washington  
Puget Sound

Wayne Balsiger  
Charlie Macaulay

(206) 725-5033  
(425) 557-4480

## **PHRF HANDICAPPERS (WWW.PHRF-NW.ORG)**

Up to 32.99'  
33' & over

Matthew Wood  
Matthew Wood

[matt.wood@razorfish.com](mailto:matt.wood@razorfish.com)  
[matt.wood@razorfish.com](mailto:matt.wood@razorfish.com)

## **STAFF**

Race Manager  
Business Services Manager

Kevin Cunningham  
Rachelle O'Haleck

[kevinc\\_cyc@yahoo.com](mailto:kevinc_cyc@yahoo.com)  
[office@cycseattle.org](mailto:office@cycseattle.org)

## TABLE OF CONTENTS

<b>Corinthian Yacht Club of Seattle .....</b>	<b>2</b>
<b>Shilshole Clubhouse .....</b>	<b>2</b>
<b>2013 Yacht Club Officers .....</b>	<b>2</b>
<b>2013 Yacht Club Directors .....</b>	<b>2</b>
<b>2013 Sailing Program Officers .....</b>	<b>2</b>
<b>Council Chairs.....</b>	<b>2</b>
<b>Protest Chairs .....</b>	<b>2</b>
<b>PHRF Handicappers (www.phrf-nw.org) .....</b>	<b>2</b>
<b>Staff .....</b>	<b>2</b>
<b>Table of Contents.....</b>	<b>3</b>
<b>Foreword.....</b>	<b>5</b>
<b>Special Programs.....</b>	<b>6</b>
<b>Puget Sound Rookie Rally .....</b>	<b>6</b>
<b>CYC Junior Program.....</b>	<b>6</b>
<b>Notice of Race and Sailing Instructions .....</b>	<b>7</b>
<b>2013 CYC Racing Policies.....</b>	<b>7</b>
CYC Membership Status .....	7
CYC Race Packages .....	7
CYC Guest Policy.....	7
PHRF Rating .....	8
Minimum Number of Boats Registered .....	8
Late Registrations.....	8
Boats Not Registered.....	8
Exceptions.....	8
Shilshole Bay Guest Moorage.....	8
<b>2013 Season Package Fees .....</b>	<b>9</b>
Lake Fleet Packages .....	9
Sound Large Boat Fleet Packages.....	9
Sound One-Design Small Boat Fleets.....	9
<b>2013 CYC Lake Washington Race Calendar.....</b>	<b>10</b>
<b>2013 CYC Puget Sound Large Boats Race Calendar.....</b>	<b>11</b>
<b>2013 CYC Puget Sound One-Design Small Boats Race Calendar .....</b>	<b>12</b>
<b>General Sailing Instructions .....</b>	<b>13</b>
<b>Puget Sound Special Sailboat Safety Regulations .....</b>	<b>18</b>
<b>Puget Sound Large Boat Racing Program .....</b>	<b>19</b>
<b>Center Sound Series .....</b>	<b>19</b>
Blakely Rock Race.....	20
Scatchet Head Race .....	21
Three Tree Point Race .....	21
<b>Puget Sound Spring Regatta (Large Boats) Puget Sound Sailing Championships (Large Boats) .....</b>	<b>22</b>
<b>Puget Sound Wednesday Evening Series.....</b>	<b>24</b>
<b>Puget Sound Jack 'N Jill Double-Handed Race .....</b>	<b>25</b>
<b>Northwest Challenge Cup .....</b>	<b>25</b>

<b>Puget Sound one-Design Small Boat Racing Program.....</b>	<b>26</b>
Puget Sound Thursday Evening Series.....	26
Puget Sound Spring Regatta (Small Boats) Puget Sound Sailing Championships (Small Boats).....	27
Sound One-Design Late Days Regatta .....	28
Turkey Bowl.....	29
<b>Puget Sound Marks— Descriptions &amp; Locations .....</b>	<b>30</b>
<b>Lake Washington Racing Program.....</b>	<b>31</b>
Lake Washington Tuesday Evening Series.....	31
Lake Washington Wednesday Evening Series .....	31
Lake Washington Distance Series .....	32
Lake Washington Moonlight Distance Race .....	33
Lake Washington Fall Regatta .....	33
<b>Lake Washington Marks— Descriptions and Locations.....</b>	<b>34</b>

## **FOREWORD**

Welcome to the Corinthian Yacht Club Seattle's 2013 racing season. There are plenty of opportunities to have fun while learning more and improving your sailing skills. For the distance racers we have the Center Sound Series. For the buoy focused we have PSSR, NOOD, PSSC and weeknight racing. For dinghies, small boats and short-handed sailing we have the Late Days, Turkey Bowl and Jack & Jill. The Commodore Gibson will be in August this year.

Corinthian has a long history of providing quality racing and a clubhouse for post-racing carousing. In 2013 we will use this racing platform to enrich the CYC community experience. To that end we have added events like to the following.

The Center Sound Series Casual class continues this year. This family and fun oriented class is for people to test their skills against other similar displacement type boats. If you don't have a PHRF rating we'll craft a 'club rating' just for the event including consideration for the more cruising oriented layout. The new first Friday socials have been expanded to include weather and tactic discussions on Fridays prior to the major regattas. Wednesday night racing on the Sound will be open to non-members like Thursday nights. The webpage is being continuously updated. Some may have noticed that the Classic weather page back by popular demand under the Racing tab. CYC welcomes T37 RC radio controlled sail boat as the newest race fleet. There will be regular race committee meetings to include lake, sound and one design councils as well any other interested parties.

There are several education initiatives in 2013 including the annual Rookie Rally. Providing in-depth racing instruction through a series of talks and on the water mentoring, it is a great opportunity for skippers and crew. Learn about Racing Rules, Sailing Instructions, starting procedures, finding the favored side, starting tactics, finding wind shifts, boat speed basics and more. For those interested in the deeper mechanics of race management there is a one day race management seminar in March.

Building a long term volunteer culture will continue to be important in 2013. Race committee and event management will need assistance. Thank you for taking an active role in the sailing community. Have a fun 2013 sailing season.

Bill Blodgett  
Fleet Captain Race  
Moore 124, More Cowbell  
fleetcaptainrace@cycseattle.org

## **SPECIAL PROGRAMS**

### **PUGET SOUND ROOKIE RALLY**

(Coordinator – Bruce Van Deventer)

May 13<sup>th</sup> & 20<sup>th</sup>, June 3<sup>rd</sup> & 10<sup>th</sup>

This four-week program at Shilshole provides in-depth racing instruction through a series of classroom talks and on-the-water mentoring. The Rookie Rally is perfect for boat owners who want to break into racing and crewmembers who want to improve their skills and become invaluable to a skipper. Learn about Racing Rules, Sailing Instructions, starting procedures, finding the favored side, starting tactics, finding wind shifts, boat speed basics and more. Bruce Van Deventer, an experienced keelboat and dinghy racer with international world championship experience, teaches the Rookie Rally and is not to be missed. Please see website for further details.

### **CYC JUNIOR PROGRAM**

June - August

CYC is continuing its Junior Program that was restarted in 2011. The Learn-to-Sail program will offer two-week and one-week camps from June through August for youths from 7 to 14 where instructors will provide a fun atmosphere for young sailors to learn sailing skills and safety in club-owned single-handed Optimist dinghies. The CYC camps are cost effective. They provide many hours per day of instruction adding value for both parents and our participating youth. A two-hour one-day a week program is for youths from 5 to 7 to learn basic sailing skills and to have fun on the water. CYC also sponsors an Opti racing team whose members train for a significant part of each year and participate in local, regional and national regattas. Check the CYC website at <http://www.cycseattle.org/juniors/> for more information.

## **NOTICE OF RACE AND SAILING INSTRUCTIONS**

This 2013 *Race Book* serves as the Notice of Race and contains the sailing instructions for all CYC races currently scheduled for 2013.

### **2013 CYC RACING POLICIES**

#### **CYC Membership Status**

There are several classes of CYC Members.

- Adult/Family Members are full voting members of the club with all the rights and privileges available.
- A Junior Member is a person who was 18 or younger at the beginning of 2013 who has joined CYC either separately as a Junior Member or through an Adult Family Membership.

Junior Members are welcome to enter any CYC event. Juniors Members and Adult Members who were 24 or younger at the beginning of 2013, or individuals who live outside of King, Snohomish, Kitsap or Pierce counties who meet these age requirements, pay 50% of individual CYC event entry fees. Junior Members may participate in the Sound Small Boat Thursday Evening Series for free. (Juniors and adult racers who were 24 or younger at the beginning of 2013 who live in King, Snohomish, Kitsap or Pierce counties must be CYC members to receive the 50% race fee discount.) Whenever a Junior or Adult 24 and younger race fee is paid, the helmsman of the boat must meet either the Junior or Adult 24 and under definition.

For events not specifically designated as “junior events”, CYC requires a ratio of one safety boat for every ten juniors who are under the age of 15 on the day of the first start. The ratio cannot be less than 1:10. It is the responsibility of the parents and coaches to provide the safety boats. CYC does not guarantee the availability of junior safety boats.

- An Associate Member is a sailor who does not own a 50% or greater interest in a sailboat that is 23 or more feet long.

Associate Members may crew and enjoy the CYC’s social and educational programs (including the use of the bar). We ask Adult and Senior Member skippers to encourage their regular crew to join as Associate Members for only \$96/year to support our activities and become more closely related to the Club and the opportunities it offers. Associate members may not register for racing.

Please visit [www.cycseattle.org/membership](http://www.cycseattle.org/membership) for more information.

#### **CYC Race Packages**

Purchasing a Race Package permits a specific person to participate in a distinct group of CYC race events at a substantial discount as compared to the already discounted member rate for the individual events. Only CYC Adult and Senior Members, their spouses/domestic partners, their children under the age of 19, and CYC Junior Members are eligible to purchase Race Packages. Substitutions may not be made to package contents. If you are not a member of US Sailing, add 10% to the package fee. (In order to encourage participation and manage class breaks, package registrants may be contacted prior to each regatta or series to confirm participation.)

#### **CYC Guest Policy**

- **Weekend Events:** Individuals who are not members of CYC but who are members of any club that is an active or associate PIYA member or is affiliated with US Sailing, may enter any CYC weekend event by paying the “Guest” entry fee. See the CYC Racing Schedule for detailed fee information.
- **Evening Series :** Any individual who is not a member of CYC may enter any CYC Wednesday or Thursday evening series raced on the Sound by paying the applicable “Guest” entry fee. See the CYC Racing Schedule for fee information. Any individual may enter any CYC Tuesday or Wednesday evening

series on Lake Washington for a period of twelve months from the date of their first evening series registration.

### **PHRF Rating**

A boat is considered to have a valid PHRF rating only if current PHRF dues have been paid. You can get a valid PHRF rating or check your status by calling PHRF Northwest at (253) 857-8858 or on the web at <http://www.phrf-nw.org>.

### **Minimum Number of Boats Registered**

If fewer than 10 keelboats or 15 dinghies register for a race by the race deadline, the race may be cancelled and the per race entry fees refunded.

### **Late Registrations**

Please register by the stated deadlines. This allows our staff to organize scoring and generate class breaks efficiently. The more time it takes to manage races, the more expensive it gets. Late registrations may be accepted, but **a late fee of \$25 might be charged** in addition to the fee listed for the event.

### **Boats Not Registered**

Boats that race in CYC evening events and are not registered by the second evening of racing may not be scored and may subject their fleet to a lost start on the next evening's race.

### **Exceptions**

The CYC Fleet Captain Race, Commodore or Vice Commodore may make exceptions to these policies.

### **Shilshole Bay Guest Moorage**

Boats seeking guest moorage for CYC Regattas must contact the Shilshole Bay Marina office upon arrival in the marina to receive instructions. The boater can contact the office by phone at (206) 728-3006 during office hours (M-F 8:00- 4:30 or Saturday 8-3) or on VHF Channel 17. After hours phone is (206) 601-4089. Guest moorage fees are based on LOA. Reserving slips in advance of arrival is encouraged.



## **2013 SEASON PACKAGE FEES**

### **LAKE FLEET PACKAGES**

<b>Package</b>	<b>Events:</b>	<b>Members</b>
Lake Full Access Plus	Tuesday or Wednesday Evening Racing, all other Lake Racing Events, plus PSSR and PSSC (Small Boat or Large Boat per SI's)	\$560
All Lake Racing	Tuesday or Wednesday Evening Racing and the Moonlight Race, Lake Fall Regatta and the Lake Distance Series	\$490
	Tuesday or Wednesday Lake Per Evening Series	\$140

### **SOUND LARGE BOAT FLEET PACKAGES**

<b>Package</b>	<b>Events:</b>	<b>Members</b>	<b>Guests</b>
Sound Large Boat Full Access	All Sound Large Boat Events	\$690	\$950
Sound Wed. Evening Series	Sound Wednesday Evenings	\$490	\$670
	Per Series Wednesday Evenings	\$140	\$190

### **SOUND ONE-DESIGN SMALL BOAT FLEETS**

<b>Package</b>	<b>Events:</b>	<b>Members</b>	<b>Jr. Members</b>	<b>Guests</b>
Sound Small Boat Full Access	All Sound Small Boat Events	\$375	\$115	\$470
Sound Full Access Single Handed	As Above for Single Handed Boats	\$300	\$65	\$370
Sound Small Boat Thurs. Eve. Series	All Sound Thursday Series	\$260	Free	\$330
Sound Small Boat Thurs. Eve. Series Single Handed	As Above for Single Handed Boats	\$200	Free	\$260

## **2013 CYC LAKE WASHINGTON RACE CALENDAR**

*Lake Fleets are invited to race in several Sound events, including Center Sound, PSSR, Sound OD Late Days, and PSSC Regattas. See SI's and Sound Calendars for more information*

Event	Dates	Members	Guests
NOOD Regatta	May 17-19	See <a href="http://www.sailingworld.com/nood-regattas/seattle">www.sailingworld.com/nood-regattas/seattle</a>	
Nelson Point Race	March 31	Free	\$25
Moonlight Distance Race	Aug 10	Free	\$25
North Point Race	Sept 8	Free	\$25
Lake Fall Regatta	Sept 21	\$45	\$60
Spring Tuesday Evenings	Apr 16, 23, 30 May 7, 14,	\$140	N/A
Interim Tuesday Evenings	May 21, 28, June 4, 11, 18, 25	\$140	N/A
Summer Tuesday Evenings	July 2, 9, 23, 30 August 6, 13 (no race July 16 WIRW)	\$140	N/A
Fall Tuesday Evenings	Aug 20, 27 Sept 3, 10, 17	\$140	N/A
Spring Wednesday Evenings	Apr 17, 24, May 1, 8, 15	\$140	N/A
Interim Wednesday Evenings	May 22, 29, June 5, 12, 19, 26	\$140	N/A
Summer Wednesday Evenings	July 10, 24, 31 Aug 7, 14 (no race July 17 WIRW)	\$140	N/A
Fall Wednesday Evenings	Aug 21, 28 Sept 4, 11, 18	\$140	N/A

## 2013 CYC PUGET SOUND LARGE BOATS RACE CALENDAR

Event	Dates	Members	Guest
Center Sound Series	<i>Full Series:</i>	\$110	\$150
Blakely Rock	March 2	\$45	\$60
Scatchet Head	March 9	\$45	\$60
Three Tree Point	March 23	\$45	\$60
Cruiser	<i>Full Series:</i>	Free	\$50
Cruiser	<i>Per Race</i>	Free	\$25
Puget Sound Spring Regatta (Large Boats)	April 20 & 21	Boats 28' and up - \$95 Boats under 28' - \$75	\$125 \$100
NOOD Regatta	May 17 - 19	See <a href="http://www.sailingworld.com/nood-regattas/seattle">www.sailingworld.com/nood-regattas/seattle</a>	
Rookie Rally	May 13, 20 June 3, 10	Free	\$100
<i>Sound OD Late Days Regatta</i>	<i>June 21-23</i>	<i>See SI's &amp; Puget Sound OD Small Boats Schedule</i>	
Jack & Jill Double-Hand	June 29	Free	\$25
Commodore Gibson	August 24 & 25	Free	N/A
Puget Sound Sailing Championship (Large Boats)	Oct 12 & 13	Boats 28' and up - \$95 Boats under 28' - \$75	\$125 \$100
Spring Wed Evenings	Apr 17 24, May 1, 8, 15	\$140	\$190
Interim Wed Evenings	May 24, 29, June 5, 12, 21, 26	\$140	\$190
Summer Wed Evenings	July 10, 24, 31 Aug 7, 14 (no race) July 17 WIRW)	\$140	\$190
Fall Wed Evenings	Aug 21, 28, Sept 4, 11, 18	\$140	\$190

*For a complete list of non-CYC large boat racing events, please refer to the Seattle Area Racing Calendar: <http://www.cycseattle.org/2013-seattle-area-racing-calendar/>*

## **2013 CYC PUGET SOUND ONE-DESIGN SMALL BOATS RACE CALENDAR**

<b>Event</b>		<b>Dates / boats</b>	<b>CYC member</b>	<b>Guest</b>
Puget Sound Spring Regatta (Small Boats)		April 13 & 14		
		1 person boat	\$45	\$65
		2&3 person boat	\$60	\$80
		4+ person boat	\$75	\$100
NOOD Regatta		May 17-19	See <a href="http://www.sailingworld.com/nood-regattas/seattle">www.sailingworld.com/nood-regattas/seattle</a>	
Sound OD Late Days Regatta		June 22-24		
		1 person boat	\$60	\$80
		2&3 person boat	\$70	\$90
		4+ person boat	\$90	\$125
Puget Sound Sailing Championship (Small Boats)		Oct 5 & 6		
		1 person boat	\$45	\$65
		2&3 person boat	\$60	\$80
		4+ person boat	\$75	\$100
Turkey Bowl		Nov 23 & 24	\$45	\$65
Thursday Series:			CYC Members	Guests
Single Night Drop In			Drop in \$20/evening	Drop in \$20/evening
Small Boat Spring Thurs. Evenings	Apr 18, 25 May 2, 9, 16		\$75 / 2+person boat \$60 Single Handed	\$95 / 2+person boat \$80 Single Handed
Small Boat Interim Thurs. Evenings	May 23, 30, June 6, 13, 20, 27		\$75 / 2+person boat \$60 Single Handed	\$95 / 2+person boat \$80 Single Handed
Small Boat Summer Thurs. Evenings	July 11, 25, 26, Aug 1, 8, 15(no race July 18 WIRW)		\$75 / 2+person boat \$60 Single Handed	\$95 / 2+person boat \$80 Single Handed
Small Boat Fall Thurs. Evenings	Aug. 22, 29, Sept 5, 12, 19		\$75 / 2+person boat \$60 Single Handed	\$95 / 2+person boat \$80 Single Handed

# **GENERAL SAILING INSTRUCTIONS**

## **LAKE WASHINGTON AND PUGET SOUND RACING PROGRAMS**

*These General Sailing Instructions shall be applied together with the Specific Event Sailing Instructions for Corinthian Yacht Club Racing Programs.*

### **1. REGISTRATION**

Early registration aids in the efficient planning of quality regattas. Please help us create quality events by registering before the stated deadlines. **To enter an event, submit your registration and payment online at [www.cycseattle.org](http://www.cycseattle.org) by 1600 at least three business days before the first race entered. (E.g., by 1600 Wednesday for a Saturday Regatta). Registrations received after this deadline may be assessed a \$25.00 late fee. For assistance, please contact the CYC Office at (206) 789-1919 or [racefleetcaptain@cycseattle.org](mailto:racefleetcaptain@cycseattle.org).**

### **2. RULES**

Races will be governed by the 2013-2016 *Racing Rules of Sailing* ('RRS'), the prescriptions of *US SAILING*, the rules adopted by local one-design fleets (when applicable), the rules of PHRF Northwest (when applicable), PIYA Category Equipment Requirements OR ISAF Special Regulations (where specified), these General Sailing Instructions, and the Specific Event Sailing Instructions for each event. For Puget Sound Racing Programs, the Special Sailboat Safety Regulations modify the General and Specific Event Sailing Instructions and govern in the case of conflict. In case of conflict between these General Sailing Instructions and the Specific Event Sailing Instructions for an event, the Specific Event Sailing Instructions will govern.

### **3. NOTICES TO COMPETITORS**

- 3.1 Official Notices and Class Breaks will be posted at [www.cycseattle.org](http://www.cycseattle.org).** Notices posted within 24 hours of the first race in a series will be posted at the respective venue's notice board. The Lake Washington Notice Board is a bulletin board case located on the north fence across from the hoist in the lower parking lot directly east of the BluWater Bistro hereafter referred to as the "Leschi Notice Board." The Puget Sound Notice Board is a bulletin board at the upper level entrance door to the CYC Shilshole Clubhouse and the adjacent window, hereafter referred to as the "Shilshole Notice Board."
- 3.2** Any change in the sailing instructions will be posted on the Venue Notice Board at least 90 minutes before the first warning of the race in which it will take effect. Code flag "L" may be flown from the Clubhouse Flagstaff (Shilshole)/Race Tower (Leschi) or the Race Committee Boat at its moorage (Leschi).
- 3.3** The Race Committee may post on the Venue Notice Board a list of boats scored OCS, DNS, ZFP, BFD, or DNF at the earliest opportunity after returning to dock and before the stated protest time limit.

### **4. RESPONSIBILITY**

- 4.1** The skipper of each boat is responsible for any unsportsmanlike conduct on the part of his or her crew. If action is taken under RRS 69, Allegations of Gross Misconduct, it may result in a competitor being excluded from further participation in CYC racing programs.
- 4.2** Occasionally, sailboat racing has resulted in injury or loss of life. All competitors in CYC events participate at their own risk. It shall be the responsibility of the skipper to inform the crew of the risks of sailboat racing, to make sure they understand and accept those risks, to decide whether the crew is competent and adequate for the event, to determine the seaworthiness of the boat; and to decide whether to start or continue in a race.

- 4.3** All boats/boat owners shall have liability insurance currently in effect, covering yacht racing activities, property damage, personal injury and death in an amount appropriate for the type of boat being sailed. (Minimum coverage of \$300,000 per occurrence is recommended for keelboats.)
- 4.4** When a boat is notified that she has been selected for an inspection of required safety equipment, she shall report for and submit to the inspection.
- 4.5** While racing on Puget Sound, Boats must be operated in accordance with US Coast Guard Vessel Traffic Service (VTS) Regulations and shall monitor VHF channel 14 when in the vicinity of, and while occupying, the VTS lanes.

## **5. SIGNALS MADE ASHORE**

Signals made ashore at Lake Washington will be displayed from the Race Tower or the Race Committee Boat at its moorage. Signals made ashore at Shilshole will be displayed from the CYC Clubhouse flagstaff. When flag “AP,” the Postponement Signal, is lowered after having been displayed ashore, all contestants shall proceed promptly to the starting area.

## **6. SAFETY**

- 6.1** Competitors in centerboard boats shall wear a personal flotation device, PFD, other than a wetsuit or drysuit **at all times** when racing. Between November 1 and April 1, competitors in centerboard boats shall wear a wetsuit or drysuit in addition to a PFD.
- 6.2** All keelboats (including those with retractable keels), shall comply with the U.S.C.G. Federal Requirements for Recreational Boating.  
(See [www.uscgboating.org/assets/1/workflow\\_staging/Publications/420.PDF](http://www.uscgboating.org/assets/1/workflow_staging/Publications/420.PDF))
- 6.3** All keelboats (including those with retractable keels), unless racing in a one-design class, shall comply with the equipment requirements of EITHER (A) OR (B):
- (A) PIYA Category III Special Regulations (see [http://piyasailing.com/2013\\_PIYACertificate\\_A.pdf](http://piyasailing.com/2013_PIYACertificate_A.pdf)) with the following modifications:
- (1) PIYASR 3.8 interpreted that a radar reflector with any dimension less than 6 inches does not meet the requirement.
- (B) ISAF Category 4 Special Regulations (see <http://www.sailing.org/specialregs>) with the following modifications:
- (1) OSR 3.02.1, 3.11, 3.19, 3.22 not required for boats under 9 meters or boats under 12 meters with crew torso position inboard and mostly below the local sheerline except briefly to perform a necessary task.
- (2) OSR 3.14 not required for boats under 9 meters without lifelines or boats under 12 meters without lifelines with crew torso position inboard and mostly below the local sheerline except briefly to perform a necessary task.
- (3) OSR 3.27.5 not required for permanently sealed, non-serviceable LED fixtures.
- (4) OSR 3.28.1 (a) and (b) required. If using an outboard motor, it shall be on its operating mount and easily inserted into the water for immediate use including during severe sea and wind conditions.
- (5) OSR 3.28.3 (a) and (b) required. Change OSR 3.28.3 (b) duration requirement to 6 hours.
- (6) OSR 3.29.1(f) not required.

- (7) OSR 4.06.1 must include anchor and 150' of rode consisting of chain and line with rode minimum weight LOA<sup>2</sup>/80 lbs. and combined anchor and rode minimum weight of (LOA/17)<sup>3</sup> + LOA<sup>2</sup>/80 lbs. (LOA in feet.)
- (8) OSR 4.10.1 octahedral radar reflector minimum diagonal measurement changed to 300 mm (12 inches). In addition, radar reflector must have a minimum dimension on any axis of 150mm (6 inches) or greater.
- (9) OSR 4.26.4 (f) and (g) not required.
- (10) OSR 5.01.1 (a) and (b) replaced by US Sailing prescription to RRS 40, (c) required from one hour before sunset until sunrise.

- 6.4** Competitors needing help should signal by waving an open hand. A wave of a closed fist will be interpreted to mean help is not needed.
- 6.5** A boat that leaves the racing area before finishing or before the last race of a day should notify the Race Committee in person or via VHF channel 67, 69 or 72 and receive a response from the Race Committee.
- 6.6** Navigation lights, if standard equipment for the boat, shall be lit between sunset and sunrise and in times of restricted visibility per COLREGS Rule 20.
- 6.7** While sailing on Puget Sound the *Special Sailboat Safety Regulations* apply. These regulations immediately precede these General Sailing Instructions.
- 6.8** A boat that breaks sailing instruction 6.2, 6.3, or 6.7 could receive a warning, be disqualified or not accepted in future competition, depending on the severity of her offense. This changes RRS 64.1(a).

## **7. CHANGES IN RATING**

A change in a PHRF rating takes effect on the day it is recorded by the local handicapper. If a change in a boat's rating occurs during a series, then, for that series only, the boat shall continue to sail in the fleet in which she was sailing before her rating was changed, and she will be eligible for awards in that fleet. After the date the rating change takes effect, the boat's corrected time will be calculated using her new rating.

## **8. STARTING ORDER**

Classes will start in the order in which class placards are displayed, reading from left to right and from the top line to the bottom line on the Race Committee Boat reader-board. When a plus sign ("+") is displayed between two class placards, those two classes will start together at the same time. The starting order for subsequent races may be different than the starting order for the first race.

## **9. COURSES**

- 9.1** Each course will be signaled by a row of letters following the placards of the classes that are to sail that course. Each letter designates a mark. The first letter displayed is the starting mark, the last is the finishing mark, and those in between are the rounding marks.
- 9.2** Mark descriptions and locations are provided with the Specific Sailing Instructions for each venue in this *Race Book*. NOTE: The leeward marks may be either to windward and/or leeward of the Race Committee Boat.
- 9.3** Start between the starting mark and the orange flag on the Race Committee Boat. Pass each rounding mark in the order displayed and on the same side as the starting mark. Finish between the finishing mark and the orange flag on the Race Committee Boat. When a number, such as "2" or "3", follows the course letters, it signals a multiple-lap course. Sail the course as many times as is indicated by that number, crossing the finishing line at the completion of each lap.

- 9.4** Gate mark: If flag “G” is displayed at the preparatory and the starting signals for a class, there will be a gate (two marks) instead of a single mark for that class, and boats shall pass between the two gate marks and then round either the port gate mark to port or the starboard gate mark to starboard.
- 9.5** Individual classes may be abandoned or shortened by displaying their class flag along with the appropriate race signal flag.
- 9.6** Warning: The Race Committee may use its engine to hold position, and it may do so even when apparently anchored.
- 9.7** When boats are finishing after dark, the Race Committee Boat may display a yellow/green beacon.
- 9.8 IMPORTANT RESTRICTION:** After completing the first leg of the course, a boat shall not cross the line between mark F and the Race Committee Boat or the line between mark “G” and the orange flag on the Race Committee Boat (when mark “G” is set) unless she is:

- (a) finishing,
- (b) completing a lap of a multiple-lap course (as indicated by a number following a designated course), or
- (c) rounding the mark end of the starting or finishing line when such a rounding is required by the course for her class.

A boat that breaks this rule shall not correct her error; however, she will be exonerated if she takes a Two-Turns Penalty (see RRS 44.2). This changes RRS 28.1. A boat that fails to exonerate herself may be scored DNF without a hearing. This changes RRS 63.1 and Appendix A5. On a leg of the course from Windward to Leeward or from Leeward to Windward, boats may leave the line between the Race Committee Boat and F either to port or to starboard. For reasons of safety, on legs of the course from Windward to Leeward or from Leeward to Windward, the finishing line, the Race Committee Boat and mark F and (when set) the Race Committee Boat and mark G are, taken together, one obstruction and therefore RRS 19 and 20 may apply between boats while they are approaching and passing it.

- 9.9 SHIP CANAL RESTRICTED AREA:** When on Puget Sound, boats shall not enter the area defined by the following three lines:

- From the south end of the Shilshole breakwater northwestward to buoy C “1”
- From buoy C “1” southwestward to buoy N “2”
- From buoy N “2” southeastward to buoy N “4”

A boat that enters this area may not correct her error. This changes RRS 28.1. This area is considered to be an obstruction.

## 10. THE START

Races will be started by using RRS 26, except a blue shape MAY replace flag P. The Race Committee may hail the next class whose warning signal is about to be made.

When the Specific Sailing Instructions note a 3 minute starting sequence, the interval between the warning signal and the start will be THREE minutes with the Preparatory Signal given at TWO minutes and the Preparatory Signal removed at ONE minute. This changes RRS 26.

## 11. INDIVIDUAL RECALLS

The Race Committee may attempt to hail the sail numbers of recalled boats. Failure to do so, the timing of the hails, the order of the hails, the failure to hear the hail, or any other issues associated with the hail will not constitute grounds for redress. This modifies RRS 62.1(a).

## 12. PROTESTS



**12.1 WEEKEND REGATTAS:** Protests shall be delivered to the Protest Committee no later than one hour after the Race Committee Boat docks. The schedule of protest hearings will be posted on the Leschi Notice Board/Shilshole Protest Board along the west wall of the lower level of the CYC Shilshole Clubhouse shortly after the protest time limit. This posting is considered notice given as required by RRS 63.2 and satisfies the notice requirement of RRS 61.1(b). Hearings will proceed whether or not all boats are represented. Protesting parties may be offered the opportunity to participate in voluntary protest mediation.

For **PSSR (Large Boat)** and **PSSC (Large Boat)**, protests will include arbitration as outlined in the Specific Sailing Instructions.

**12.2 ALL WEEKNIGHT EVENTS:** Protests shall be sent to the CYC office by mail with a U.S. Postal Service postmark date no later than the first weekday following the race in which the incident occurred or hand delivered, faxed or emailed before the end of office hours on that day. (CYC Office Staff may note the time of sending and receipt on participant's protest form.) This changes RRS 61.3. Parties to a hearing will be notified of the date, location and time of their hearing.

**12.3** A protested boat may elect to acknowledge breaking a rule and to accept the appropriate penalty. In such a case she should notify the Protest Committee Chairman to that effect and the hearing may be waived. This changes RRS 63.1.

### **13. PENALTIES TAKEN AFTER A RACE**

**13.1** After a race, a boat that may have broken a rule of Part 2 or rule 31 while *racing* may take a Scoring Penalty. Rules 44.1(a) and (b) apply when such a penalty is taken. Rules 44.3(a) and (b) are deleted and replaced by: 'A boat takes a Scoring Penalty by informing the race committee in writing, identifying the race number and when and where the incident occurred.'

**13.2** If taken before the protest time limit, the penalty shall be a 20% Scoring Penalty. If taken after the protest time limit but before the start of a hearing of a *protest* involving the incident, the penalty shall be a 30% Scoring Penalty. The penalty shall be calculated as stated in rule 44.3(c).

### **14. SCORING**

**14.1** The Low Point scoring system of RRS Appendix A will apply. Boats that are OCS, did not finish, retire, or are disqualified will score points equal to the number of boats that finish in their class in that race plus one. Boats that do not start will score points equal to the number of boats that finish in their class in that race plus two. This changes RRS Appendix A4.2 and A9.

**14.2** PHRF corrected times will be calculated using the time-on-time method on Lake Washington. PHRF corrected times will be calculated using the time-on-distance method on Puget Sound.

**14.3** A boat's series score is the sum of her points in all the races. This changes RRS Appendix A2.

**14.4** One completed race will constitute a series.

### **15. AWARDS**

Corinthian Awards will be presented for all events as indicated in the Specific Sailing Instructions. The results of each event will be posted on the CYC web site.

### **16. MOVABLE BALLAST**

A boat designed to use and constructed with equipment to pump on board, discharge and move water ballast may use that equipment, provided her PHRF rating assumes its use. This changes RRS 51.

### **17. BOAT STORAGE/MOORAGE**

Unless notified to the contrary, competitors must make their own arrangements for boat storage/moorage.

## **PUGET SOUND SPECIAL SAILBOAT SAFETY REGULATIONS**

We must share Puget Sound with its commercial traffic, including many deep-water vessels and long tows. It is sobering to note that, if your boat is one mile dead ahead of a freighter coming down the Sound at normal speed, and the freighter's helm is put hard over to avoid you, the freighter's bow will miss you, but her stern will not! Obviously this implies that early and decisive action is required to keep your boat out of the path of a large oncoming vessel or tow.

***In case there is conflict between the Special Sailboat Safety Regulations and the General or Specific Sailing Instructions, the Special Sailboat Safety Regulations govern.***

1. Yachts must not sail across a towline, too close ahead, or too close alongside of commercial traffic. Deep-water vessels have limited ability to change course and speed. Barges under tow can yaw unexpectedly well out to the side at speeds essentially the same as they are being towed. Yachts should not pass less than ONE mile ahead and 1/4 mile to the side of large vessels.
2. Rule 10 of the International and Inland Rules to Prevent Collisions at Sea (COLREGS) requires that no power driven vessel less than 20 meters (66 feet) in length, and no sailing vessel (of any size) may impede the safe passage of a power driven vessel following a Vessel Traffic System (VTS) Lane.
3. Rule 9 of the COLREGS requires that no power vessel of less than 20 meters (66 feet) in length and no sailing vessel (of any length) shall impede the safe passage of any vessel which can navigate only within a narrow channel or fairway. Puget Sound can be considered a "narrow channel" for most large commercial traffic. "Impede" means cause to alter speed or course or to take evasive action.
4. A yacht in position where it may impede commercial traffic must exit from the "danger area" immediately, under auxiliary power if necessary. If power is used, it must be reported to the Race Committee at the finish line. Also, a written report must be made on a protest form, showing the location, time, duration of power use, speed, direction of exit, and that the competitive position of the yacht was not improved. If the last item cannot be demonstrated adequately, a time penalty may be imposed.
5. Octahedral Radar reflectors must be flown at least 13 feet (4 meters) above the waterline at all times when racing in the vicinity of the VTS Traffic Lanes. The radar reflector must have a minimum diagonal measurement of 300 mm (12 inches). In addition, the radar reflector must have a minimum dimension on any axis of 150mm (6 inches) or greater.
6. Navigation lights must be shown between sunset and sunrise and in times of restricted visibility as required by the International Rules of the Road.
7. Observed and/or reported violations of the safety regulations may be protested. The Protest Committee shall have the option of issuing a "warning" when deemed appropriate. Warnings are recorded and may be considered when judging any future reports.

# **PUGET SOUND LARGE BOAT RACING PROGRAM**

## **SPECIFIC EVENT SAILING INSTRUCTIONS**

*These Specific Event Sailing Instructions shall be applied together with the General Sailing Instructions for the Puget Sound Large Boat Program. In case of conflict, the Specific Event Sailing Instructions govern.*

---

### **CENTER SOUND SERIES**

*Includes the Blakely Rock Light, Scatchet Head and Three Tree Point Races. The Center Sound Series offers a terrific opportunity to give sailboat racing a try.*

**ELIGIBILITY:** Open to boats with **valid PHRF** or IRC ratings and multihulls and one-design classes with five or more entrants. In addition, a Casual Class will be offered for each race of the series. See Casual Class Rules. **All boats, including those racing one-design, must meet PIYA Category III or ISAF Category 4 as modified in the General Sailing Instructions.**

**CLASS FLAGS, RATING BREAKS AND STARTING ORDER:** Class flags, rating breaks and starting order will be posted at [www.cycseattle.org](http://www.cycseattle.org) by 1200 on Friday prior to the start of each race.

**CHECK-IN, CHECK-OUT:** The Race Committee would like all boats to sail by the Race Committee Boat and hail with their sail number. A boat that withdraws or retires should notify the Race Committee at their earliest opportunity via VHF 69.

**FIRST WARNING: 1000**

**SAFETY INSPECTIONS:** If a boat is hailed by the Race Committee at the finish and instructed to report for a safety inspection, she shall report directly to the CYC Safety Inspectors at the North end of the Shilshole Bay Marina.

**SCORING:** The scoring system for the “The Werner Ohmes Fog Horn Trophy, Overall Winner, Center Sound Series” is as follows:

A boat’s score for a race is:  $100 (N + 1 - P) / (N + 1)$  points, where P is her place in her class in that race and N is the number of starters in her class in that race. A boat that does not finish scores  $(66) / (N + 1)$  points, a disqualified boat scores:  $(33) / (N + 1)$  points, and a boat that does not start scores 0 points. A boat’s series score is the sum of her score in all races in the series. High score wins.

**AWARDS:** Individual class trophies will be awarded at the Shilshole Clubhouse, Saturday, March 23 after racing. If race on the 24<sup>th</sup> is abandoned or cancelled, the trophies will be presented Saturday, March 23 at 1700 hours.

The Blakely Rock Light Trophy, Scatchet Head Trophy (FKA Possession Point) and Three Tree Point Trophy (FKA Pulley Point) for first overall PHRF boat in each of those races, based on corrected time, will be awarded at the CYC Annual Awards Party. The Werner Ohmes Fog Horn Trophy for the overall winner of the Center Sound Series will also be awarded at the CYC Annual Awards Party.

**MOORAGE:** See note regarding **Shilshole Bay Guest Moorage** on page 8 of the *Race Book*.

**PARTY TIME / RACE RESULTS:** The CYC Clubhouse will be open during and after each race. Race results will be posted at the Clubhouse and on the CYC web page.

**CASUAL CLASS RULES:** The Casual Class is offered to provide a venue for less serious or less experienced sailors to get out and have fun on the water in a more casual field. All rules in this Race Book and the Racing Rules of Sailing apply except where noted. The most basic of them being Starboard over Port, Leeward over Windward and don't hit anyone.

**CASUAL CLASS ELIGIBILITY:** All boats are welcome to the Casual Class. This changes RRS 78. Boats without PHRF certificates are encouraged to join PHRF-NW ([www.phrf-nw.org](http://www.phrf-nw.org)) and contact CYC's PHRF handicapper Matthew Wood at [matt.wood@razorfish.com](mailto:matt.wood@razorfish.com). If a PHRF certificate has not been obtained, the Fleet Captain Race, Bill Blodgett, will assign a "participation" handicap. It is each boat's responsibility to contact Bill at [racefleetcaptain@cycsseattle.org](mailto:racefleetcaptain@cycsseattle.org) to obtain a "participation" handicap at the time of registration.

**CASUAL CLASS START AND COURSE:** The Casual Class 5 Minute Warning will be signaled 10 minutes after the last Racing Fleet Start. Please see Class Breaks and Starting Order posted as described above. Please stay clear of the starting area until all Racing Fleets have cleared.

The Casual Class will sail the courses described in the specific race instructions below. Please be prepared for potential shortened courses likely to be signaled from the Committee Boat prior to the cruising start if conditions warrant it. (See *Puget Sound Mark Descriptions and Locations* immediately following the Sound Specific Event Sailing Instructions for mark descriptions and locations.)

**CASUAL CLASS SCORING:** The Casual Class will be scored independently of other classes and will not be eligible for the overall series awards. Casual Class boats will be scored with their spinnaker rating unless boat skippers specifically inform the Race Committee of their decision to race under their NFS, non-flying sails rating. Please indicate your preference on your registration or to the Race Committee Boat via VHF channel 69 immediately after the last racing start but before the Casual Class Warning Signal. FS and NFS boats will be scored in the same class with their respective ratings.

**CASUAL CLASS AWARDS:** The Casual Class trophies will be awarded at the Shilshole Clubhouse, Saturday, March 23, after racing. If the race on March 24<sup>th</sup> is abandoned or cancelled, the trophies will be presented Saturday, March 24, at 1700 hours. Recognition will be given to the first boat in each race based on handicapped time.

---

### **Blakely Rock Race**

**STARTING AND FINISHING AREA:** In the vicinity of Shilshole Breakwater.

**START:** Racing Classes shall start in reverse order.

**COURSE:** (Please refer to *Puget Sound Marks* immediately following the Sound Specific Event Sailing Instructions for mark descriptions and locations.) After starting, leave mark N and mark K to port (north wind), or mark K and mark N to starboard (south wind), then finish. The sequence of marks will be signaled from the Race Committee Boat Reader Board. Course length: approximately 21 nautical miles. Alternate courses may be signaled from the Race Committee Boat by flying code flag "S".

**CASUAL CLASS COURSE:** (Please refer to *Puget Sound Marks* immediately following the Sound Specific Event Sailing Instructions for mark descriptions and locations.) After starting, leave mark N and mark W to port

(north wind), or mark W and mark N to starboard (south wind), then finish. The sequence of marks will be signaled from Race Committee Boat Reader Board. Course length: approximately 12.4 nautical miles. Alternate courses may be signaled from the race committee boat by flying code flag "S".

**TIME LIMIT:** Eight hours for the first boat in each class. If a boat in a class finishes within eight hours, all other boats in her class must finish within one hour of the first boat to finish or within eight hours, whichever is longer. This changes RRS 35.

---

### **Scatchet Head Race**

**STARTING AND FINISHING AREA:** In the vicinity of Meadow Point.

**START: Racing Classes shall start in reverse order.**

**COURSE:** After starting, leave the gong buoy off Scatchet Head to port, and then finish. Course length: approximately 25.4 nautical miles. Alternate courses may be signaled from the Race Committee Boat by flying code flag "S".

**CASUAL CLASS COURSE:** After starting, leave mark R to port, mark L to port, and then finish. Course length: approximately 8.9 nautical miles. Alternate courses may be signaled from the race committee boat by flying code flag "S".

**TIME LIMIT:** Nine hours for the first boat in each class. If a boat in a class finishes within nine hours, all other boats in her class must finish within one hour of the first boat to finish or within nine hours, whichever is longer. This changes RRS 35.

---

### **Three Tree Point Race**

**STARTING AND FINISHING AREA:** In the vicinity of Shilshole Breakwater.

**START: Racing Classes shall start in reverse order.**

**COURSE:** After starting leave the Turning Mark to starboard and return to finish. The Turning Mark is a white cylinder, 6 inches in diameter standing 8 feet above the water and is located south and east of Three Tree Point. Approximate coordinates are: N 47° 26.87' by W 122° 22.57'. Course length: approximately 29.5 nautical miles. Alternate courses may be signaled from the Race Committee Boat by flying code flag "S".

**CASUAL CLASS COURSE:** After starting, round the Duwamish Head Light at approximately 47° 35.94'N by 122° 23.28' W to starboard, and then finish. Course length: approximately 12.8 nautical miles. Alternate courses may be signaled from the race committee boat by flying code flag "S".

**TIME LIMIT:** Nine hours for the first boat in each class. If a boat in a class finishes within nine hours, all other boats in her class must finish within one hour of the first boat to finish or within nine hours, whichever is longer. This changes RRS 35.

---

**PUGET SOUND SPRING REGATTA (LARGE BOATS)**  
**PUGET SOUND SAILING CHAMPIONSHIPS (LARGE BOATS)**

*These instructions cover the PSSR (Large Boat) and PSSC (Large Boat) weekends only. PSSR (Small Boat) and PSSC (Small Boat) Instructions are found under the Sound OD Small Boat Racing Program Specific Sailing Instructions.*

*PSSR and PSSC (Large Boat) weekends are level-rating regattas for PHRF-rated boats grouped into classes with small rating spreads. When it is impractical to race level due to an insufficient number of boats with similar ratings, some classes will race on handicap using the time-on-distance method. There will be one-design starts for classes that have five or more boats registered and planning to compete.*

**ELIGIBILITY (Large Boats):** Boats with **valid PHRF** ratings that meet **PIYA Category III** requirements or **ISAF Category 4 as modified in the General Sailing Instructions** are eligible. One-design starts will be offered to boats of 24 feet LOA and over (*except the J/24 fleet who will sail in the PSSR/PSSC (Small Boats) weekends*) when five or more boats register before the registration deadline. Boats sailing in designated one-design classes must comply only with their one-design class safety requirements. All boats must comply with the Special Sailboat Safety Regulations as noted in General Sailing Instruction 6.7.

**CLASS FLAGS AND RATING BREAKS:** Class flags and rating breaks will be posted at [www.cycseattle.org](http://www.cycseattle.org) by 1200 on Friday prior to the first day of each regatta.

**CHANGES TO SAILING INSTRUCTIONS:** Any changes in the sailing instructions will be posted on the Shilshole Notice Board before 0800 on each race day. Code flag “L” may be flown from the Clubhouse flagstaff to notify competitors of such changes.

**RACING AREAS:** Boats may determine their class and course location by consulting the class lists posted at the Shilshole Notice Board or on the CYC web site. The north course will race north of Meadow Point. The south course will race in Shilshole Bay.

**CHECK-IN:** Each day before the start of racing, the Race Committee would like all boats to check-in with their respective Race Committee by sailing by the Race Committee Boat and hailing their sail number (i.e. NOT via VHF). A boat that withdraws or retires should notify the Race Committee at their earliest opportunity via VHF channel 67 if racing on the north course and channel 72 on the south course.

**FIRST WARNING:** First warning at **1030** each day. Subsequent races will be started at the discretion of the Race Committee.

**THE START:** A boat starting later than 10 minutes after her starting signal may be scored DNS without a hearing. This changes rule RRS 63.1 and Appendix A5.

**IMPORTANT RESTRICTION:** After completing the first leg of the course, a boat shall not cross the **starting** line unless she is rounding the mark end of the start line when such a rounding is required by the course for her class. A boat shall not cross the **finishing** line unless she is completing a lap of a multiple-lap course (as indicated by a number following a designated course) or until she is completing the last leg of the course and finishes. A boat that breaks this rule shall not correct her error; however, she will be exonerated if she takes a Two-Turns Penalty (see RRS 44.2). This changes RRS 28.1. A boat that fails to exonerate herself may be scored DNF without a hearing. This changes RRS 63.1 and Appendix A5. On a leg of the course from Windward to Leeward or from Leeward to Windward, boats may leave the line between S and F either to port or to starboard. For reasons of safety, on legs of the course from Windward to Leeward or from Leeward to

Windward, the starting and finishing lines and the marks S and F are, taken together, one obstruction and therefore RRS 19 and 20 may apply between boats while they are approaching and passing it.

**TIME LIMIT:** The time limit will be two hours for the first boat in the class. If one boat in a class finishes within two hours, all other boats in her class must finish within thirty minutes of the first boat to finish or within two hours whichever is longer. This changes RRS 35.

**SCORING:** A boat's series score is the sum of her points in all the races. There will be no discarded scores. This changes RRS Appendix A2.

**PROTESTS:** Protests will include arbitration. An arbitration meeting will be scheduled for each protest involving a rule of Part 2 unless the arbitrator deems the protest inappropriate for arbitration. One representative of each party, who was on board at the time of the incident, will meet with the arbitrator. No witnesses will be permitted. After taking testimony from each representative, the arbitrator will render his/her opinion in one of the following ways:

- (a) The protest is invalid or no boat broke a rule. If the protestor agrees, the arbitrator will allow the protest to be withdrawn and it shall not be reopened or appealed. If the protestor disagrees, the protest committee will schedule a protest hearing.
- (b) One or more boats broke a rule. The boat(s) breaking the rule may accept a 20% Scoring Penalty and the protest may be withdrawn. If not, the protest committee will schedule a protest hearing. If the penalty is accepted the matter is closed and cannot be resubmitted to a hearing, be reopened, appealed, or submitted for redress.
- (c) The arbitrator decides a protest hearing is required. The protest committee will schedule a protest hearing.

For this arbitration, RRS 63.1 is changed by adding; "The arbitrator may allow a protest to be withdrawn without the approval of the protest committee."

**DINNER:** A light meal will be provided at additional cost on Saturday.

**AWARDS:** First, Second and Third place trophies will be awarded for each class with five or more pre-registered boats. Awards will be presented at the CYC Shilshole Clubhouse on Sunday after the race.

**MOORAGE:** See note regarding **Shilshole Bay Guest Moorage** on page 8 of the *Race Book*.

---



## PUGET SOUND WEDNESDAY EVENING SERIES

**ELIGIBILITY:** Registration is open to CYC Members and non-CYC Members. Boats with **valid PHRF** ratings and one-design boats when classes are specified for them are eligible.

**CLASS FLAGS AND RATING BREAKS:** Class flags and rating breaks for PHRF boats will be posted at [www.cycseattle.org](http://www.cycseattle.org) by 1200 on Tuesday prior to the first race of each series. One-design classes with five or more registered boats may be given their own start.

**CHECK-IN:** Before racing, the Race Committee would like all boats to sail by the Race Committee Boat and hail their sail numbers.

**FIRST WARNING: 1815**

**STARTING AREA:** In the vicinity of the Shilshole breakwater.

**STARTING INTERVAL:** 5 minutes.

**TIME LIMIT:** The time limit will be two hours for the first boat in the class. If one boat in a class finishes within two hours, all other boats in her class must finish within thirty minutes of the first boat to finish or within two hours whichever is longer. This changes RRS 35.

**SCORING:** For every five races completed there will be one discarded score. This changes RRS Appendix A2.

**AWARDS:** First, Second and Third place trophies will be awarded for each class with six or more pre-registered boats. Awards will be presented at the CYC Shilshole Clubhouse on the final Wednesday of each series after the racing is completed.

---



## PUGET SOUND JACK 'N JILL DOUBLE-HANDED RACE

*This race is part of the Puget Sound Jack and Jill Series*

**ELIGIBILITY:** Any boat with a **valid PHRF** rating racing with a crew consisting of only two people is eligible. Boats with a crew of one female and one male are eligible for the Jack 'N Jill Series award.

**SAFETY:** It is recommended that all competitors wear life jackets.

**SKIPPERS' MEETING:** A mandatory skippers' meeting will be held at 1000 at the CYC Shilshole Clubhouse.

**CLASS FLAGS AND RATING BREAKS:** Class flags and rating breaks will be posted at the skipper's meeting. There will be a flying-sail (FS) division and a non-flying-sail (NFS) division. A boat with a rating based on flying sails (FS) may register in the NFS division, in which case her NFS rating will be her FS rating plus 18 seconds. This changes PHRF Handicapper's Manual, Paragraph 9g. An NFS registrant should enter this adjusted rating on her entry form and use this rating to determine the NFS class in which she starts. It is the responsibility of the skipper to race with the appropriate rating.

**STARTING AREA:** In the vicinity of the Shilshole breakwater.

**WARNING:** The time of the first warning will be posted at the skippers' meeting.

**COURSE:** After starting, leave Blake Island to starboard and then finish. An alternate course may be signaled from the Race Committee Boat by flying code flag "S".

**TIME LIMIT:** Eight hours for the first boat in each class. If a boat in a class finishes within eight hours all other boats in her class must finish within one hour of the first boat to finish or within eight hours, whichever is longer. This changes RRS 35.

---

## NORTHWEST CHALLENGE CUP

*The Northwest Challenge Cup will be awarded to the boat with the best record in the Center Sound Series, Puget Sound Spring Regatta (Large Boat), and the Puget Sound Sailing Championships (Large Boat).*

**SCORING:** A boat's Northwest Challenge Cup score is the sum of her finishing positions in her class in each of the three series on which the Challenge Cup is based. Ties will be resolved in favor of the boat with the highest average number of starters in her class in the races of the three series, except that a tie among boats that win their class in all three series will not be broken.

---

# **PUGET SOUND ONE-DESIGN SMALL BOAT RACING PROGRAM**

## **SPECIFIC EVENT SAILING INSTRUCTIONS**

*These Specific Event Sailing Instructions shall be applied together with the General Sailing Instructions for the Puget Sound One-Design Small Boat Racing Program. In case of conflict, the Specific Event Sailing Instructions govern.*

---

### **PUGET SOUND THURSDAY EVENING SERIES**

**ELIGIBILITY:** Registration is open to CYC Members and Non-Members alike. Racers may register for all four series in a Package, each individual series, or on a drop in basis.

Participation is limited to Optimist, 420, 505, Kite Board, 49er, I-14, Moth, Tasar, Laser, Snipe, Star, or Etchells with four or more registered boats. Additional Classes may be added with a written request to the Fleet Captain Race, Bill Blodgett, [racefleetcaptain@cycseattle.org](mailto:racefleetcaptain@cycseattle.org)

**CLASS FLAGS:** Class flags will be posted at [www.cycseattle.org](http://www.cycseattle.org) by 1200 on Wednesday prior to the first race of each series.

**CHECK-IN:** The Race Committee would like all boats to sail by the Race Committee Boat before the start of the race.

**FIRST WARNING:** 1815

**STARTING AREA:** In the vicinity of the Shilshole breakwater.

**STARTING INTERVAL:** 3 minutes. This changes RRS 26.

**TIME LIMIT:** The time limit will be two hours for each boat in the class. This changes RRS 35.

**SCORING:** For every five races completed there will be one discarded score. This changes RRS Appendix A2.

---

**PUGET SOUND SPRING REGATTA (SMALL BOATS)**  
**PUGET SOUND SAILING CHAMPIONSHIPS (SMALL BOATS)**

**ELIGIBILITY (Small Boats):** Laser; I-14; Musto Skiff; Moth; Tasar; 49er; Optimist; 420; Etchells; Star; Thistle; Snipe; Melges 20/SB3; Hobie 16; J/24; and one-design dinghy fleets or light displacement keelboats of 24 feet LOA and less with fleets of five or more registered boats.

**PSSC (Small Boats) ELIGIBILITY:** Laser; I-14; Musto Skiff; Moth; Tasar; 49er; Optimist; 420; Etchells; Star; Thistle; Snipe; Melges 20/SB3; Hobie 16; J/24; and one-design dinghy fleets or light displacement keelboats of 24 feet LOA and less with fleets of five or more registered boats.

**CHECK-IN:** The Race Committee would like all boats to sail by the Race Committee Boat before racing.

**FIRST WARNING:** 1200 on Saturday, 1100 on Sunday.

**RACING AREAS:** Boats may determine their course location by consulting the class lists posted at the CYC Shilshole Clubhouse or on the CYC website. The north course will race north of Meadow Point. The south course will race in Shilshole Bay.

**THE START:** A boat starting later than 10 minutes after her starting signal may be scored DNS without a hearing. This changes RRS 63.1 and Appendix A5.

**IMPORTANT RESTRICTION:** After completing the first leg of the course, a boat shall not cross the finishing line unless she is completing a lap of a multiple-lap course (as indicated by a number following a designated course) or until she is completing the last leg of the course and finishes.

A boat that breaks this rule shall not correct her error, provided, however, she will be exonerated if she takes a Two-Turns Penalty (see RRS 44.2). This changes RRS 28.1. A boat that fails to exonerate herself may be scored DNF without a hearing. This changes RRS 63.1 and Appendix A5. On a leg of the course from Windward to Leeward or from Leeward to Windward, boats may leave the line between the Race Committee Boat and F either to port or to starboard. For reasons of safety, on legs of the course from Windward to Leeward or from Leeward to Windward, the finishing line, the Race Committee Boat and mark F are, taken together, one obstruction and therefore RRS 19 and 20 may apply between boats while they are approaching and passing it.

**STARTING INTERVAL:** 3 minutes. This changes RRS 26.

**TIME LIMIT:** The time limit will be two hours for each boat in the class. This changes RRS 35.

**SCORING:** If five or more races are completed, her worst score will be discarded when determining her series score. This changes RRS Appendix A2.

**DINNER:** A light meal will be provided at additional cost on Saturday for PSSC.

**AWARDS:** First, second and third place trophies will be awarded for each pre-registered class, with five or more registered boats. Awards will be presented at the Clubhouse following racing on Sunday.

**GUEST MOORAGE AND DRY STORAGE:** The North Parking lot adjacent to the Shilshole Marina dry storage area may be used for trailer and dry-sailed boat storage. For wet moorage, please see **Shilshole Bay Guest Moorage** on page 8 of the *Race Book*.

## SOUND ONE-DESIGN LATE DAYS REGATTA

*This is a three-afternoon, one-design regatta for all dinghies and small keelboats under 26 feet LOA. There will be one-design starts for classes that have five or more boats registered before the deadline.*

*Fleets are encouraged to invite out of town boats to participate with the hope that this will become a premier travelling event for your fleet and may be used for local, regional and other championships. Individual Fleets may modify these sailing instructions to cater to their specific wishes. Fleet Captains shall notify the Race Fleet Captain in writing with such a request no later than 14 days prior to the first race. Revisions will be accommodated as much as possible.*

**ELIGIBILITY:** Laser; I-14; Musto Skiff; Moth; Tasar; 49er; Optimist; Etchells; Star; Thistle; Snipe; Melges 20/SB3; San Juan 24; J/24; Melges 24; Moore 24; Merit 25; Thunderbird and any other one-design dinghy or one-design small keelboat fleets 26 feet LOA and less with five or more registered boats.

**CHECK-IN:** Each day before the start of racing, the Race Committee would like all boats to check-in with their respective Race Committee by sailing by the Race Committee Boat and hailing their sail number. A boat that withdraws or retires should notify their respective Race Committee in person at their earliest opportunity.

**RACING AREAS:** Boats may determine their class and course location by consulting the class lists posted at the CYC Shilshole Notice Board or on the CYC web site. The north course will race north of Meadow Point. The south course will race in Shilshole Bay.

**FIRST WARNING:** First warning on Friday at 1730, Saturday at 1200 and Sunday at 1000. Subsequent races will be started at the discretion of the Race Committee. No warning signal will be made after 2000 on Friday and Saturday and after 1430 on Sunday.

**THE START:** A boat starting later than 10 minutes after her starting signal may be scored DNS without a hearing. This changes rule RRS 63.1 and Appendix A5.

**STARTING ORDER:** The starting sequence for each race will be displayed on the Race Committee reader board. The starting sequence for subsequent races may be different than the starting sequence for the first race.

**GATE AT LEEWARD MARK:** If Flag "G" is displayed at the warning for a class, there will be a gate (two marks) instead of a single leeward mark for that class, and boats shall pass between the two gate marks and then round either the port gate mark to port or the starboard gate mark to starboard.

**IMPORTANT RESTRICTION:** After completing the first leg of the course, a boat shall not cross the finishing line unless she is completing a lap of a multiple-lap course (as indicated by a number following a designated course) or until she is completing the last leg of the course and finishes.

A boat that breaks this rule shall not correct her error, provided, however, she will be exonerated if she takes a Two-Turns Penalty (see RRS 44.2). This changes RRS 28.1. A boat that fails to exonerate herself may be scored DNF without a hearing. This changes RRS 63.1 and Appendix A5. On a leg of the course from Windward to Leeward or from Leeward to Windward, boats may leave the line between the Race Committee Boat and F either to port or to starboard. For reasons of safety, on legs of the course from Windward to Leeward or from Leeward to Windward, the finishing line, the Race Committee Boat and mark F are, taken together, one obstruction and therefore RRS 19 and 20 may apply between boats while they are approaching and passing it.

**STARTING INTERVAL:** 3 minutes. This changes RRS 26.

**TIME LIMIT:** The time limit will be two hours for each boat in the class. This changes RRS 35.

**SCORING:** For every five races completed there will be one discarded score. This changes RRS Appendix A2.

**AWARDS:** First, second and third place trophies will be awarded for each pre-registered class, with five or more boats registered. Awards will be presented at the Clubhouse following racing on Sunday.

**GUEST MOORAGE AND DRY STORAGE:** The North Parking lot adjacent to the Shilshole Marina dry storage area may be used for trailer and dry-sailed boat storage. For wet moorage, please see **Shilshole Bay Guest Moorage** on page 8 of the *Race Book*.

---

### **TURKEY BOWL**

**ELIGIBILITY:** 49er; I-14; Moth; Etchells; Star; Tasar; Laser; Optimist; and any other one-design dinghy or small keelboat fleets with five or more registered boats.

**CLASS FLAGS:** Class flags will be posted at the Shilshole Notice Board at least one hour before the first warning of each event.

**CHECK-IN:** The Race Committee would like all boats to sail by the Race Committee Boat before racing.

**FIRST WARNING:** 1200 on Saturday, 1100 on Sunday. No race will start after 1600.

**STARTING AREA:** In the vicinity of the Shilshole breakwater.

**STARTING INTERVAL:** 3 minutes. This changes RRS 26.

**TIME LIMIT:** The time limit will be two hours for each boat in the class. This changes RRS 35.

**SCORING:** A boat's series score is the sum of her points in all the races. There will be no discarded scores. This changes RRS Appendix A2.

**AWARDS:** First, second and third place trophies will be awarded for each class. Awards will be presented at the Clubhouse following racing on Sunday.

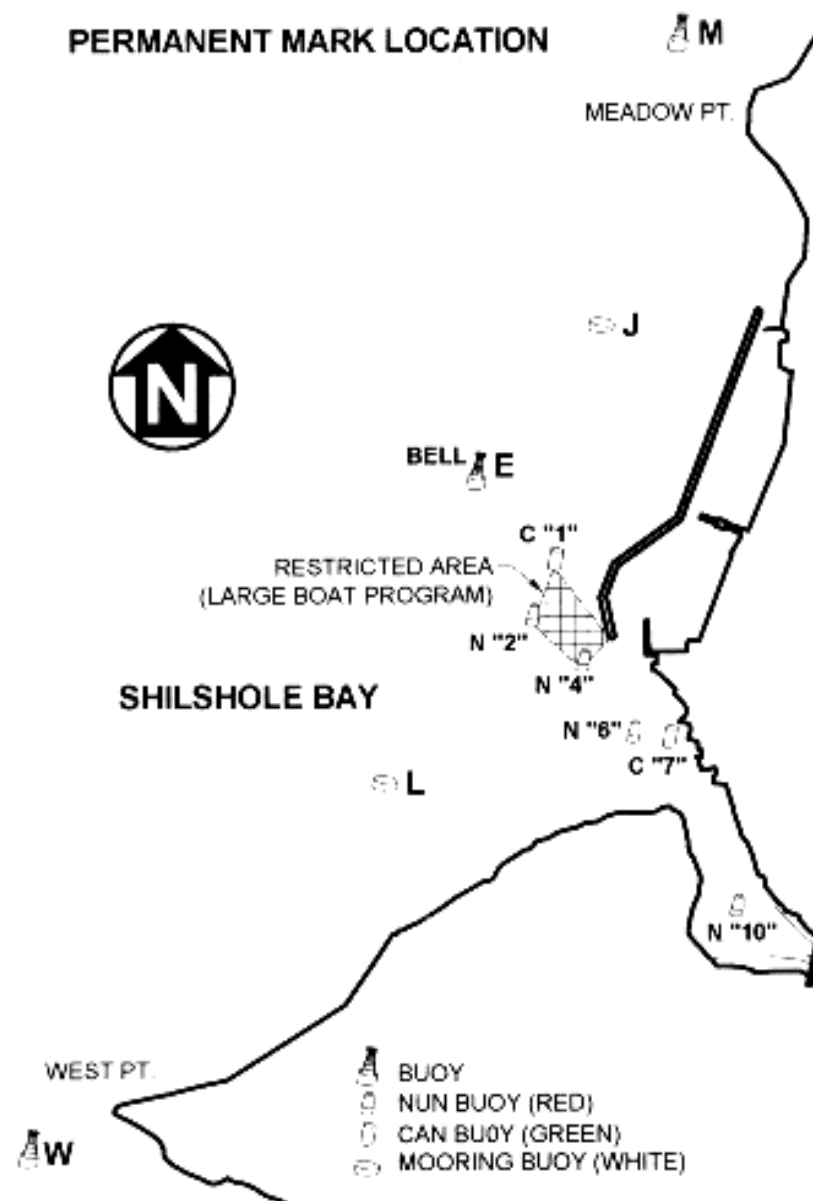
---

## **PUGET SOUND MARKS— DESCRIPTIONS & Locations**

Code		Temporary Marks
A		Yellow mark to windward of the Race Committee, RC, Boat
B		Yellow gybe mark
C		Yellow mark to leeward of the RC Boat
F		Yellow mark near the RC Boat, on the opposite side of the Committee Boat from mark S
G		Pink ball set between “S” and the RC Boat
O		Pink ball approximately 150 feet from windward mark
S		Orange mark near the RC Boat
U		Red mark located to leeward of the RC Boat
X		Red mark to windward of the RC Boat
Y		Red gybe mark
Z		Red mark located 0.2 miles or less upwind of the RC Boat
N		Yellow/orange mark 1 mile east (mag.) of mid-channel VTS buoy “SF”, at approx. 47° 45.60’N; 122° 24.84’W
Code		Permanent Marks
E		Red and white mid-channel bell buoy located west of the south end of the Shilshole breakwater
J		White mooring buoy near the north end of the Shilshole breakwater
K		Blakely Rocks
L		White mooring buoy located southwest of mark “E”
M		Meadow Point green flashing buoy “1”
R		Spring Beach- A 3.5-ft. high White Spar Buoy located in 50’ of water in the vicinity of Spring Beach, approximately 2 nm N of Meadow Point at approximately 47° 44.40’ N by 122 22.90’ W.
W		West Point green flashing buoy “1”

*NOTE: Distances from the Race Committee Boat to marks A, B, and C are generally longer than the distances to marks X, Y, and U*

## **PUGET SOUND PERMANENT MARK LOCATION**



# **LAKE WASHINGTON RACING PROGRAM**

## **SPECIFIC EVENT SAILING INSTRUCTIONS**

*These Specific Event Sailing Instructions shall be applied together with the General Sailing Instructions. In case of conflict, the Specific Event Sailing Instructions govern.*

---

### **LAKE WASHINGTON TUESDAY EVENING SERIES**

### **LAKE WASHINGTON WEDNESDAY EVENING SERIES**

#### **ELIGIBILITY:**

- **Tuesday:** J-24
- **Wednesday:** San Juan 24, Thunderbirds, Thistles and other one-design boats 26' LOA or less with five or more registered boats.

**CLASSES AND CLASS FLAGS:** A list of classes and the assigned class flags will be posted at [www.cycseattle.org](http://www.cycseattle.org) by 1200 on Tuesdays during the racing season.

**FIRST WARNING:** 1800

**TIME LIMIT:** Two hours for all boats in each class. This changes RRS 35.

**SCORING:** If four to six races are completed, one score will be discarded, if seven to nine races, two will be discarded, and if ten or more races, three will be discarded.

**AWARDS:** First, Second and Third place trophies will be awarded for each class. Awards will be after the final day of each series after the racing is completed.

---

## LAKE WASHINGTON DISTANCE SERIES

*This series consists of the Nelson Point and North Point Races.*

**ELIGIBILITY:** Open to boats with **valid PHRF** ratings and to one-design fleets with five or more registered boats. PHRF membership is not required for boats in one-design fleets. One-design fleet eligibility is limited to boats normally raced with a crew of three or more persons, except by special arrangement with the CYC Race Fleet Captain.

**CLASS BREAKS, CLASS FLAGS AND STARTING ORDER:** Class breaks, class flags, and the starting order will be posted at [www.cycseattle.org](http://www.cycseattle.org) by 1200 on Friday before the first day of racing. **These events will be started using a reverse order.**

**WARNING:** 1000

**START AND FINISH LINES:** The start and finish line will be between the RC flag on the Race Tower and mark "L".

### **COURSES:**

#### **Nelson Point Race:**

South Wind: L, 14, Red Nun Buoy at the entrance to the Ship Canal, L.  
Take rounding marks to port.

North Wind: L, Red Nun Buoy at the entrance to the Ship Canal, 14, L.  
Take rounding marks to starboard.

#### **North Point Race:** L, 10, L. Round mark 10 to port.

Note: All boats shall pass under the east span of the Evergreen Point Bridge both northbound and southbound.

**SHORTENED COURSE:** The Race Committee may shorten the course at any mark or at a finish line established within 1000 feet of the north side of the bridge.

**TIME LIMIT:** Eight hours for all boats in each class. This changes RRS 35.

**SAFETY:** Boats that withdraw from the race **shall** notify the Race Committee.

**AWARDS:** The Howard Ricketts Trophy will be awarded at the CYC Annual Awards Party to the winner of the Distance Series, which includes Nelson and North point races. A boat's series score is the sum of her race scores. The race winner is the boat with the lowest corrected PHRF time. One-design class ratings will be assigned to boats of those classes by PHRF.



## LAKE WASHINGTON MOONLIGHT DISTANCE RACE

**ELIGIBILITY:** Open to boats with **valid PHRF** ratings and to one-design fleets with five or more registered boats. PHRF membership is not required for boats in one-design fleets. One-design fleet eligibility is limited to boats normally raced with a crew of three or more persons.

**CLASS BREAKS, CLASS FLAGS AND STARTING ORDER:** Class breaks, class flags and the starting order will be posted at [www.cycseattle.org](http://www.cycseattle.org) by 1200 on Friday preceding the race. **This event will be started using a reverse order.**

**FIRST WARNING:** 1900

**START AND FINISH LINE:** The start and finish line will be between the RC flag on the Race Tower and mark "L". When finishing, each boat shall shine a light on her sail number.

**COURSE:** L, 6, L. Round mark 6 to port. Note: All boats shall pass under the east span of the Evergreen Point Bridge both northbound and southbound.

**SHORTENED COURSE:** The Race Committee may shorten the course at any mark or at a finish line established within 1000 feet of the north side of the bridge.

**SAFETY:** Boats that withdraw from the race **shall** notify the Race Committee.

**TIME LIMIT:** Five hours for all boats. This changes RRS 35.

---

## LAKE WASHINGTON FALL REGATTA

**ELIGIBILITY:** J-24, San Juan 24, Thunderbirds, Thistles and other fleets with five or more registered boats.

**CLASSES AND CLASS FLAGS:** A list of classes and the assigned class flags will be posted at the Leschi Notice Board by 1000 the day of the first race.

**FIRST WARNING:** 1000, Saturday.

An attempt will be made to run several races. There will be no starts after 1700.

**TIME LIMIT:** Two hours for all boats in each class. This changes RRS 35.

**SCORING:** For every six races completed there will be one discarded score. This changes RRS Appendix A2.

**AWARDS/PARTY:** An awards party may be held after racing at a location to be announced.

---

## LAKE WASHINGTON MARKS— DESCRIPTIONS AND LOCATIONS

Code	Temporary Marks
A	Yellow mark to windward of the Race Committee Boat
B	Yellow gybe mark
C	Yellow mark to leeward of the Race Committee Boat
F	Yellow mark near the Race Committee Boat, on the opposite side of the Committee Boat from mark S
G	Pink ball set between “S” and the Race Committee Boat
O	Pink ball approximately 150 feet from a windward mark
S	Red mark near the Race Committee Boat
U	Red mark located to leeward of the Race Committee Boat
X	Red mark to windward of the Race Committee Boat
Y	Red gybe mark
Z	Red mark located 0.2 miles or less upwind of the Race Committee Boat
L	Temporary mark located within 0.10 miles of the Race Tower, (Permanent Mark “T”)
4	Temporary mark located 0.25 miles east of Magnuson Park boat launch
6	Temporary mark located 0.25 miles east of Sand Point
7	Temporary mark located 0.25 miles west of the City of Kirkland Marina
10	Temporary mark located 0.25 miles west of North Point
14	Temporary mark located 0.25 miles west of Nelson Point
Code	Permanent Marks
T	Race Tower located at the North Moorage at Leschi Park

*NOTE: Distances from the Race Committee Boat to marks A, B, and C are generally longer than the distances to marks X, Y, and U.*

