



# Center Sound Series

Blakely Rock Race – March 1, 2014  
Scatchet Head Race – March 8, 2014  
Three Tree Point Race – March 22, 2014

## Sailing Instructions

### 1 RULES

- 1.1 This regatta will be governed by the rules as defined in the Racing Rules of Sailing (RRS).
- 1.2 The prescriptions of US Sailing to the following rules apply: 34, 40, 48.1, 56, 60, 61.4, 63.2, 63.4, 64.3(b), 67, 70.5(a), 76.1, 82, 86.3, 88.2, Appendix G, R, S, and T. These prescriptions are available from the US Sailing website at [www.ussailing.org](http://www.ussailing.org).
- 1.3 A boat rated by her handicap class in consideration of water ballast may use water ballast as rated. This changes RRS 51.
- 1.4 A boat may put biodegradable sail stops in the water when hoisting a sail. This changes RRS 55.
- 1.5 Other changes to the rules may be noted elsewhere in the Notice of Race or Sailing Instructions. If the Notice of Race and Sailing Instructions are in conflict, the Sailing Instructions have precedence.

### 2 NOTICES TO COMPETITORS

- 2.1 Notices to competitors will be posted on the official notice board at the CYC clubhouse east entrance and optionally on the CYC web site at [www.cycseattle.org](http://www.cycseattle.org).
- 2.2 The race committee may provide unofficial communication at any time by hail or over VHF 69. Any communication not governed by the rules is unofficial communication. A request for redress may not be based on any aspect of unofficial communication, including content, timeliness, existence, or failure to hear. This changes RRS 62.1(a).

### 3 CHANGES TO SAILING INSTRUCTIONS

- 3.1 Changes to the Sailing Instructions posted on the official notice board will be posted by 0830 the day it will take effect.

### 4 SCHEDULE

- 4.1 The schedule of races is as follows:

<u>Race</u>	<u>Date</u>
Blakely Rock	March 1, 2014
Scatchet Head	March 8, 2014
Three Tree Point	March 22, 2014

- 4.2 The scheduled time of the first warning signal is 1000 each day. No warning signal will be made after 1400.

### 5 SIGNALS MADE ASHORE

- 5.1 There is no provision for signals made ashore.

### 6 RACING AREA AND RACE COMMITTEE SIGNAL BOAT

- 6.1 The racing area is northern Puget Sound, starting and finishing lines in Shilshole Bay.
- 6.2 The race committee signal boat will be the CYC M/V YC V. If necessary, an alternate race committee signal boat may be used. The race committee signal boat will display the CYC burgee and a blue "R/C" flag or sign.

### 7 CLASSES

- 7.1 Classes to race are PHRF-NW and IRC. Other classes of at least five boats may apply. Monohull, multihull, and casual class boats will race in separate classes.
- 7.2 The classes and class assignments will be announced as a notice to competitors issued by 1200 on Friday before the first race. Subsequent changes may be made with the same process as changes to the Sailing Instructions.

### 8 COURSES

- 8.1 The courses for each race are described below. An alternate course may be signaled, as described in Sailing Instruction 8.2.

#### **Blakely Rock Race**

**Racing Classes (North Wind):** Start by leaving the starting mark buoy to port, round mark "N" to port, round mark "K" to port, and finish by leaving the finishing mark buoy to port.

**Racing Classes (South Wind):** Start by leaving the starting mark buoy to starboard, round mark "K" to starboard, round mark "N" to starboard, and finish by leaving the finishing mark buoy to starboard.

**Casual Classes (North Wind):** Start by leaving the starting mark buoy to port, round mark "N" to port, round mark "W" to port, and finish by leaving the finishing mark buoy to port.

**Casual Classes (South Wind):** Start by leaving the starting mark buoy to starboard, round mark "W" to starboard, round mark "N" to starboard, and finish by leaving the finishing mark buoy to starboard.



### **Scatchet Head Race**

**Racing Classes:** Start by leaving the starting mark buoy to port, round Scatchet Head Lighted Gong Buoy (LL#16555) to port, and finish by leaving the finishing mark buoy to port.

**Casual Classes:** Start by leaving the starting mark buoy to port, round mark "U" to port, and finish by leaving the finishing mark buoy to port.

### **Three Tree Point Race**

**Racing Classes:** Start by leaving the starting mark buoy to port, round the TTPYC Racing Buoy C to starboard, and finish by leaving the finishing mark buoy to port. The TTPYC Racing Buoy C is a white, 6 inch diameter cylinder rising 8 feet above the water located at approximately 1000 feet SW of the Three Tree Point Light.

**Casual Classes:** Start by leaving the starting mark buoy to port, round mark "D" to port, and finish by leaving the finishing mark buoy to port.

8.2 An alternate course, replacing the course in Sailing Instructions 8.1, is in effect when flag S is displayed before or with the warning signal. The alternate course is described as follows:

(a) The course will be signaled from a reader board on the race committee signal boat. The course description is a series of letters on one row indicating the marks and their required sequence. The first letter displayed is the starting mark buoy, the last letter is the finishing mark buoy, and the letters between are rounding marks. The class number or symbol may precedes the course for that class and must be shown if there are multiple rows. Multiple classes may be listed on one row.

(c) All rounding marks other than gate marks must be left to port. When mark S or F is used as a rounding mark, a boat must also pass between the mark and the race committee signal boat when rounding.

8.3 Marks are specified in Attachment A: Mark Descriptions, if not specified in the course description.

8.4 A boat must not enter the area within the lines from the light on the Shilshole Marina jetty south end, northwestward to buoy C "1", southwestward to buoy N "2", and southeastward to buoy N "4". A boat that fails to observe this restriction may not exonerate herself. This area is an obstruction for a boat required to keep clear.

## **9 THE START**

9.1 The starting line will be between a staff displaying an orange flag on the race committee signal boat and the course side of the starting mark buoy.

9.2 Starting visual signal flag P may be replaced by a blue cylindrical shape. This changes RRS 26.

9.3 If a general recall for a preceding class is signaled after the warning signal of a succeeding class, then the visual signals for the succeeding class will be removed and the start of the succeeding class will be considered abandoned without further signal.

9.4 If a boat is subject to RRS 29.1, Individual Recall, or RRS 30, Starting Penalties, the race committee may attempt to hail her sail number directly and/or on VHF 69. This is unofficial communication as in Sailing Instructions 2.2.

9.5 A boat starting later than ten minutes after her starting signal will be scored Did Not Start (DNS). This changes RRS A5.

9.6 A boat whose warning signal has not been made must avoid the starting area when other boats are racing but have not yet started.

9.7 The race committee signal boat, when a starting mark, may maneuver to maintain the starting line at any time, including while anchored.

## **10 THE FINISH**

10.1 The finishing line will be between a staff displaying an orange flag on the race committee signal boat and the course side of the finishing mark buoy.

10.2 The race committee may adjust the finishing marks to maintain the finishing line at any time without regard to RRS 33.

10.3 If the finishing line is missing at the finish, a boat finishes by passing between mark "J" and the Shilshole Marina jetty when the buoy bears 270 degrees magnetic. If a boat finishes under these circumstances, to be scored as finishing she must note her finishing time accurately to the second (e.g. using GPS time) and her finishing position in relation to any nearby boats and report them to the race committee as soon as reasonably possible. This changes US Sailing prescription to RRS 34.

## **11 TIME LIMIT**

11.1 The time limit is the maximum allowable time from a boat's starting signal to her finish time or a time of day. A boat that does not finish within her time limit will be scored Did Not Finish (DNF). This changes RRS 35.

11.2 Time limits for each race are as follows:

**Blake Island Race:** 8 hours for the first boat in class and for other boats the later of 8 hours or 1 hour after of the first boat that sails the course.

**Scatchet Head Race:** 9 hours for the first boat in class and for other boats the later of 9 hours or 1 hour after of the first boat that sails the course.

**Three Tree Point Race:** 9 hours for the first boat in class and for other boats the later of 9 hours or 1 hour after of the first boat that sails the course.



## 12 PROTESTS

- 12.1 A boat intending to protest or request redress for an incident that occurred while racing must orally notify the race committee on the signal boat as soon as reasonably possible after retiring or finishing by hail or VHF 69 until she receives an oral confirmation from the race committee. This changes RRS 61.1(a).
- 12.2 Written protests and requests for redress must be delivered within the protest time limit to a representative of the protest committee near the official notice board.
- 12.3 The protest time limit will be posted on the official notice board and will be 45 minutes after the end of the race or 10 minutes after the posting of the time limit, whichever is later.
- 12.4 Hearing notices will be posted on the official notice board within 5 minutes after the protest time limit to inform parties of the time and place of the hearing. Hearings may commence at any time if parties are present and prepared; otherwise, hearings may be scheduled as early as 10 minutes after the protest time limit. The posting of hearing notices shall be considered notice as required by RRS 63.2.
- 12.5 A boat may not protest another boat for Sailing Instructions 9.6. This changes RRS 60.1
- 12.6 Penalties under Sailing Instructions 9.6 or 14 may be less than disqualification. This changes RRS 64.1.

## 13 SCORING

- 13.1 Boats will be scored in class and overall for each race and the series. Course overall scoring for monohulls and multihulls will be separate.
- 13.2 Corrected times for PHRF-NW handicap classes will be calculated using the Time on Distance method.
- 13.3 A boat that did not start (OCS), did not finish (DNF), retired (RET), or is disqualified (OCS, DSQ, DNE, DGM, BFD) will be scored the number of finishers plus one. A boat that did not start (DNC, DNS) will be scored the number of finishers plus two. This changes RRS A4.2. RRS A9 is deleted.
- 13.4 A boat's series score will be the total of her race scores with no scores excluded. This changes RRS A2. One race will constitute a series.

## 14 EQUIPMENT AND OPERATING REQUIREMENTS

- 14.1 Sailing is an activity that has an inherent risk of damage and injury. Competitors in this event are participating entirely at their own risk. See RRS 4, Decision to Race. The responsibility for a boat's decision to participate in a race or to continue racing is hers alone. The race organizers (organizing authority, race committee, protest committee, host club, sponsors, or any other

organization or official) will not be responsible for damage to any boat or other property or the injury to any competitor, including death, sustained as a result of participation in this event. By participating in this event, each competitor agrees to release the race organizers from any and all liability associated with such competitor's participation in this event to the fullest extent permitted by law.

- 14.2 Boats must check in with the race committee signal boat at the starting area each day before their first warning signal. Boats should check in by hail unless safety requires checking in by VHF 69.
- 14.3 A boat that retires while racing must orally notify the race committee as soon as reasonably possible after retiring by hail or VHF 69.
- 14.4 Keelboats must comply with one of the two following sets of equipment requirements, (a) or (b):
  - (a) *Pacific International Yachting Association (PIYA) Special Regulations Governing Minimum Equipment and Accommodation Standards* for 2013 effective March 1, 2013 (PIYASR), as changed by and to the category identified in the Notice of Race.
  - (b) *ISAF Offshore Special Regulations 2014-2015 (OSR)*, without US Sailing prescriptions, as changed by and to the category identified in the Notice of Race.
- 14.5 Keelboats must comply with U.S. Coast Guard regulations.
- 14.6 Keelboats must be operated in accordance with the Puget Sound Sailboat Safety Regulations, available in the Race Book available at [www.cycseattle.org](http://www.cycseattle.org).
- 14.7 The race committee may inspect a boat at any time before or after racing for compliance with requirements.
- 14.8 A boat that uses its propulsion engine under RRS 1.1 and 42.3(g) or to avoid a collision with a vessel not participating in the race must either retire or file a report with the protest committee under the same requirements as filing a protest. The report must include the reason for using the propulsion engine and distance and direction traveled. The protest committee may then protest the boat to adjust the boat's time or score to remove any advantage that may have been gained in the race. This defines the circumstances in RRS 42.3(i) and changes RRS 64.1. This does not restrict a boat from requesting redress under RRS 62.1(c) for the same incident.

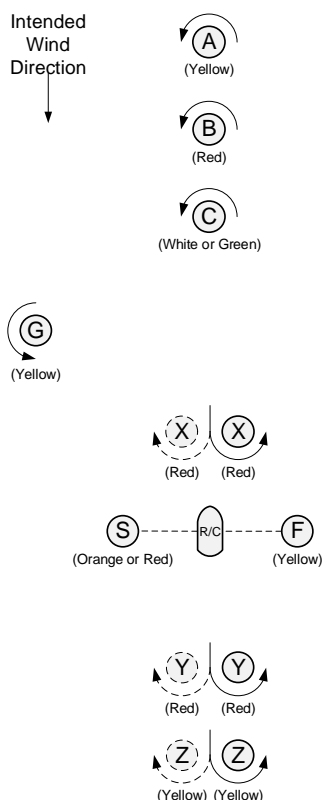
## 15 SOCIAL ACTIVITIES AND AWARDS

- 15.1 Party and awards at the CYC clubhouse after racing. Awards will be presented for 1<sup>st</sup>, 2<sup>nd</sup>, and 3<sup>rd</sup> in class for each race. Series awards will be presented for 1<sup>st</sup> overall PHRF racing classes per race and 1<sup>st</sup>, 2<sup>nd</sup>, and 3<sup>rd</sup> in class.



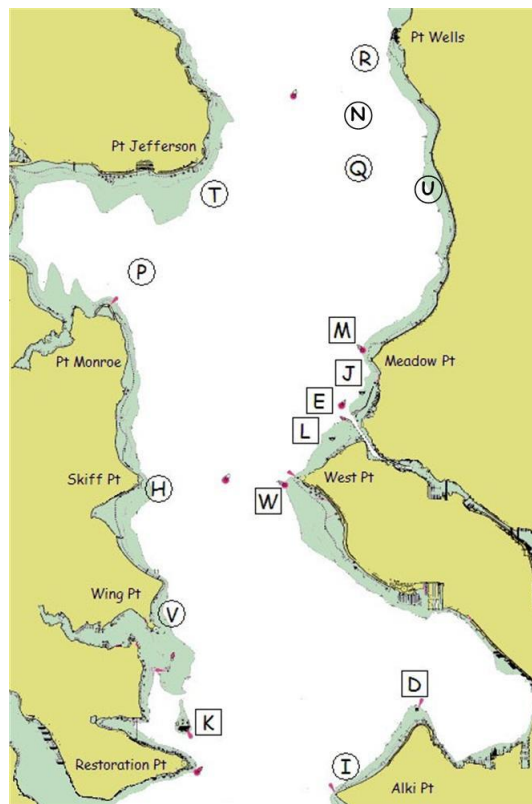
## Attachment A: Mark Descriptions

### Buoy Course Marks (position relative to R/C)



Key	
(S)	Typically starting mark buoy, may be rounding or finishing mark
(A) (B) (C)	Windward rounding mark
(G)	Gybe rounding mark
(X) (Y) (Z)	Leeward gate port mark, may be leeward rounding mark if starboard mark not present
(X) (Y) (Z)	If present, leeward gate starboard mark
(F)	Typically finishing mark buoy, may be rounding or starting mark
(Color)	Mark color shown under mark
R/C	Race committee signal boat in position as a mark
(Circular arrow)	Typical rounding course
(Dashed circular arrow)	Alternative rounding course when leeward gate starboard mark present

### Geographic Marks (position based on location)



The course diagram for buoy course marks shows the general orientation of the race committee signal boat ("R/C"), other marks (identified by the letters S, A, B, C, G, X, Y, Z and F), and the intended wind direction. All marks other than the race committee signal boat are inflatable buoys. Positions are approximate and the diagram is not to scale.

#### Notes:

- S When a starting mark for a downwind start, may be on either side of the race committee signal boat.

Bearings are magnetic. Distances are nautical miles (NM). Bearings, distances, and positions are approximate. Each temporary mark is shown with its label in a circle. Each permanent mark is near its label in a square box.

- D Duwamish Head Lt. (LL #16910)
- E Shilshole Bay Approach Buoy (LL #16785)
- H Temporary mark 0.3 NM E of Skiff Pt.
- I Temporary mark 0.5 NM N of Alki Pt.
- J Shilshole Bay ACOE N Mooring Buoy 0.25 NM SSW of N entrance
- K Blakely Rock (LL #16830)
- L Shilshole Bay ACOE S Mooring Buoy 0.5 NM SW of S entrance
- M Meadow Pt. Buoy (LL #16765)
- N Temporary mark 1.0 NM E of Traffic Separation Lane Lighted Buoy SF (LL #16745)
- P Temporary mark 0.5 NM NNE of Pt. Monroe
- Q Temporary mark 3.0 NM bearing 340° from Meadow Pt. Buoy
- R Temporary mark 0.5 NM SW of Pt. Wells
- T Temporary mark 0.5 NM SE of Pt. Jefferson
- U White spar buoy 2.9 NM bearing 6° from Meadow Pt. Buoy at 47° 44.4N, 122° 22.95W
- V Temporary mark 0.3 NM NNE of Wing Pt.
- W West Pt. Buoy (LL #16805)