

# Sound Wednesday/Thursday Evening Series

## 2014

### Sailing Instructions

There are four Wednesday series and four Thursday series, as follows:

	<u>Wednesday Series</u>	<u>Thursday Series</u>
Spring Series:	Apr 16, 23, 30, May 7, 14	Apr 17, 24, May 1, 8, 15
Interim Series:	May 21, 28, Jun 4, 11, 18, 25	May 22, 29, Jun 5, 12, 19, 26
Summer Series:	July 2, 9, 16, 30, Aug 6, 13	July 3, 10, 17, 31, Aug 7, 14
Fall Series:	Aug 20, 27, Sep 3, 10, 17	Aug 21, 28, Sep 4, 11, 18

#### 1 RULES

- 1.1 This regatta will be governed by the rules as defined in the Racing Rules of Sailing (RRS).
- 1.2 The prescriptions of US Sailing to the following rules apply: RRS 34, 40, 48.1, 56, 60, 61.4, 63.2, 63.4, 64.3(b), 67, 70.5(a), 76.1, 82, 86.3, 88.2, Appendix G, R, S, and T. These prescriptions are available from the US Sailing website at [www.ussailing.org](http://www.ussailing.org).
- 1.3 Changes to the rules may be noted elsewhere in the Notice of Race or Sailing Instructions. If the Notice of Race and Sailing Instructions are in conflict, the Sailing Instructions have precedence.

#### 2 NOTICES TO COMPETITORS

- 2.1 Notices to competitors will be posted on the official notice board at the CYC clubhouse east entrance and optionally on the CYC web site at [www.cycseattle.org](http://www.cycseattle.org).
- 2.2 The race committee may provide unofficial communication, which is communication not governed by the rules, at any time by hail or over VHF 69. A request for redress may not be based on any aspect of unofficial communication, including content, timeliness, or failure to hear. This changes RRS 62.1(a).

#### 3 CHANGES TO SAILING INSTRUCTIONS

- 3.1 Changes to the Sailing Instructions posted on the official notice board will be posted by 1630 the day it takes effect.

#### 4 SCHEDULE

- 4.1 The schedule is as follows:

1730 – 1800	Practice starts (when available)
1815	First warning signal
Sunset	No warning signal after this time
After racing	Social gathering at CYC

- 4.2 A target of at least two and up to four races may be sailed each day with a typical race duration of 20 to 60 minutes.

#### 5 SIGNALS MADE ASHORE

- 5.1 Signals made ashore will be made from a race committee signal boat while moored at Shilshole Marina within sight of the CYC clubhouse.
- 5.2 When flag AP is displayed ashore, the warning signal will be made not less than 30 minutes after the removal of AP unless at that time the race is postponed again or abandoned. This changes RRS Race Signals AP.

#### 6 RACING AREA AND RACE COMMITTEE SIGNAL BOAT

- 6.1 The racing area is Puget Sound in the vicinity of Shilshole Bay.
- 6.2 The race committee signal boat will be the CYC M/V YC 5. If necessary, an alternate race committee signal boat may be used. The race committee signal boat will display the CYC burgee and a blue "R/C" flag or sign.

#### 7 CLASSES

- 7.1 Wednesdays: PHRF-NW, IRC, J/105, Melges 24, J/80, and other keelboat classes with at least five boats may apply.  
Thursdays: Laser, Star, Snipe, Tasar, 505, I-14, and other small keelboat and centerboard classes with at least five boats may apply.
- 7.2 The classes and class assignments will be announced as a notice to competitors issued by 1200 the first day of each series. Subsequent changes may be made with the same process as changes to the Sailing Instructions.

#### 8 COURSES

- 8.1 The course will be signaled from a reader board on the race committee signal boat. The course description is a



series of letters on one row indicating the marks and their required sequence. The first letter displayed is the starting mark buoy, the last letter is the finishing mark buoy, and the letters between are rounding marks. The class number or symbol may precede the course for that class and must be shown if there are multiple rows. Multiple classes may be listed on one row.

- 8.2 Marks are specified in Attachment A: Mark Descriptions.
- 8.3 All rounding marks other than gate marks and mark F must be left to port. When mark F is used as a rounding mark, a boat must round by crossing the finishing line from the direction of the last mark. When mark S is used as a rounding mark following a leeward mark (mark Y or Z), a boat must also cross the starting line from the direction of the last mark when rounding.
- 8.4 A leeward rounding mark may be a gate mark. If one of the gate marks is missing, the course at that mark is to round the remaining mark to port.
- 8.5 If a starting or finishing mark is substituted by an object displaying flag M, repetitive sound signals are not required. This changes RRS 34(b).
- 8.6 After completing the first leg of the course, a boat shall not cross the finishing line unless she is finishing or rounding the finishing mark buoy as a rounding mark. This changes RRS 28.2. A boat that fails to observe this restriction may exonerate herself by taking a Two-Turns Penalty as described in RRS 44.2. This changes RRS 44.1 but does not change RRS 44.1(b). A boat that fails to exonerate herself will be scored Did Not Finish (DNF) without a hearing. This changes RRS 63.1 and A5. The finishing line and marks is an obstruction and not a mark for a boat required to keep clear.

## 9 THE START

- 9.1 The starting line will be between a staff displaying an orange flag on the race committee signal boat and the course side of the starting mark buoy.
- 9.2 Starting visual signal flag P may be replaced by a blue cylindrical shape. This changes RRS 26.
- 9.3 If a general recall for a preceding class is signaled after the warning signal of a succeeding class, then the visual signals for the succeeding class will be removed and the start of the succeeding class will be considered abandoned without further signal.
- 9.4 If a boat is subject to RRS 29.1, Individual Recall, or RRS 30, Starting Penalties, the race committee may attempt to hail her sail number directly and on VHF 69. This is unofficial communication as in Sailing Instructions 2.2.
- 9.5 A boat starting later than five minutes after her starting signal will be scored Did Not Start (DNS). This changes RRS A5.
- 9.6 A boat whose warning signal has not been made must avoid the starting area when other boats are racing but have not yet started.

- 9.7 The race committee signal boat, when a starting mark, may maneuver to maintain the starting line at any time, including while anchored.
- 9.8 For Thursday evenings, RRS 26 is changed so that the warning signal will be made 3 minutes before the starting signal and the preparatory signal will be made 2 minutes before the starting signal.

## 10 THE FINISH

- 10.1 The finishing line will be between a staff displaying an orange flag on the race committee signal boat and the course side of the finishing mark buoy.
- 10.2 The race committee may adjust the finishing marks to maintain the finishing line without regard to RRS 33.

## 11 TIME LIMIT

- 11.1 The time limit is the maximum allowable time from a boat's starting signal to her finish time or a time of day. A boat that does not finish within her time limit will be scored Did Not Finish (DNF). This changes RRS 35.
- 11.2 Time limit is 90 minutes for the first boat in class and for other boats 30 minutes after the first boat that sails the course.

## 12 PROTESTS AND PENALTIES

- 12.1 A boat intending to protest or request redress for an incident that occurred while racing must orally notify the race committee on the signal boat as soon as reasonably possible after retiring or finishing by hail or VHF 69 until she receives an oral confirmation from the race committee. This changes RRS 61.1(a).
- 12.2 Written protests and requests for redress must be delivered within the protest time limit to the CYC office by mail, email, or hand delivered.
- 12.3 The protest time limit will be 1700 the day after the race, except that for mail the time limit will be satisfied by mail postmarked by the day after the race and delivered by the third day after the race.
- 12.4 Hearing notices will be sent to the parties to inform them of the time and place of the hearing.
- 12.5 A boat may not protest another boat for Sailing Instructions 9.6. This changes RRS 60.1(a).
- 12.6 Penalties under Sailing Instructions 9.6 or 14 or RRS 55 may be less than disqualification. This changes RRS 64.1.
- 12.7 RRS Appendix T2, Penalties Taken After a Race, applies.
- 12.8 RRS 44.1 is changed so that the Two-Turns Penalty is replaced by the One-Turn Penalty.

## 13 SCORING

- 13.1 Boats will be scored in class.
- 13.2 A boat that did not start (OCS), did not finish (DNF), retired (RET), or is disqualified (DSQ, DNE, DGM, BFD) will be scored the number of finishers plus one. A boat that did not start (DNC, DNS) will be scored the number



of finishers plus two. This changes RRS A4.2. RRS A9 is deleted.

- 13.3 A boat's series score will be the total of her race scores, except that a boat's worst score will be excluded if six or more races are completed. This changes RRS A2. One race will constitute a series.
- 13.4 Corrected times for PHRF-NW handicap classes will be calculated using the Time on Distance method.

#### **14 EQUIPMENT AND OPERATING REQUIREMENTS**

- 14.1 Sailing is an activity that has an inherent risk of damage and injury. Competitors in this event are participating entirely at their own risk. See RRS 4, Decision to Race. The responsibility for a boat's decision to participate in a race or to continue racing is hers alone. The race organizers (organizing authority, race committee, protest committee, host club, sponsors, or any other organization or official) will not be responsible for damage to any boat or other property or the injury to any competitor, including death, sustained as a result of participation in this event. By participating in this event, each competitor agrees to release the race organizers from any and all liability associated with such competitor's participation in this event to the fullest extent permitted by law.
- 14.2 Boats must check in with the race committee signal boat at the starting area each day before their first warning signal. Boats should check in by hail unless safety requires checking in by VHF 69.

- 14.3 A boat that retires while racing must orally notify the race committee as soon as reasonably possible after retiring by hail or VHF 69.
- 14.4 For centerboard boats, competitors must wear personal floatation devices, as in RRS 40, and, for regattas November through March, must also wear a wetsuit or drysuit. These requirements apply while on the water except briefly while changing or adjusting clothing or personal equipment.
- 14.5 Keelboats must comply with the safety regulations of the US Coast Guard as identified in the Notice of Race.
- 14.6 A boat may put biodegradable sail stops in the water when hoisting a sail. This changes RRS 55.
- 14.7 The race committee may inspect a boat or equipment at any time before or after racing for compliance with requirements.
- 14.8 In addition to the requirements of RRS Part 2 preamble, a boat may not impede the passage, cross ahead within  $\frac{3}{4}$  nautical miles, or continue to approach within  $\frac{1}{4}$  nautical miles (approximately 1500 feet) to the side of a commercial or government vessel over 30 meters in length (including tug and tow) either following a traffic lane or traveling over 15 knots. Boats must follow instruction from the race committee to alter course to avoid vessels based on the race committee's interpretation of these requirements.

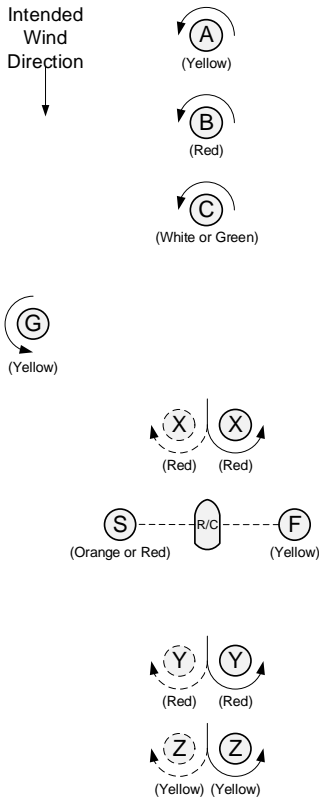
#### **15 SOCIAL ACTIVITIES AND AWARDS**

- 15.1 Party and awards after the last race in each series. Awards will be presented for 1<sup>st</sup>, 2<sup>nd</sup>, and 3<sup>rd</sup> in class.



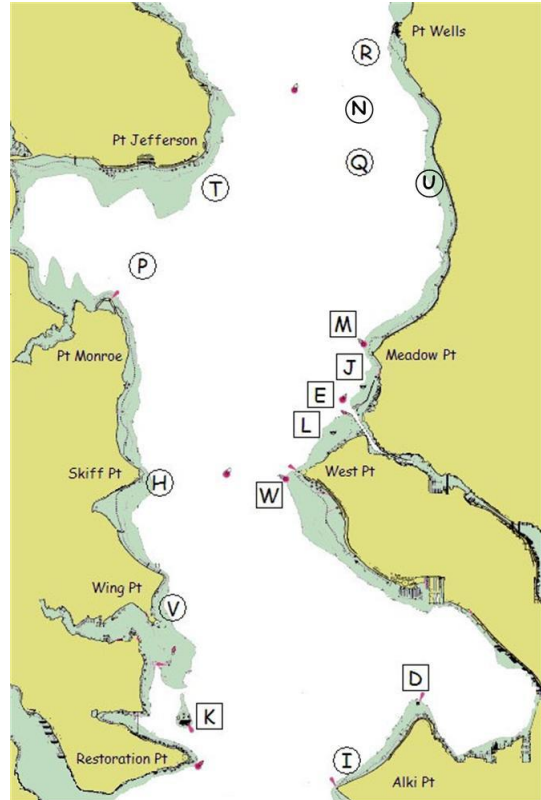
## Attachment A: Mark Descriptions

### Buoy Course Marks (position relative to R/C)



Key	
(S)	Typically starting mark buoy, may be rounding or finishing mark
(A) (B) (C)	Windward rounding mark
(G)	Gybe rounding mark
(X) (Y) (Z)	Leeward gate port mark, may be leeward rounding mark if starboard mark not present
(X) (Y) (Z)	If present, leeward gate starboard mark
(F)	Typically finishing mark buoy, may be rounding or starting mark
(Color)	Mark color shown under mark
R/C	Race committee signal boat in position as a mark
(Circular arrow)	Typical rounding course
(Dashed circular arrow)	Alternative rounding course when leeward gate starboard mark present

### Geographic Marks (position based on location)



The course diagram for buoy course marks shows the general orientation of the race committee signal boat ("R/C"), other marks (identified by the letters S, A, B, C, G, X, Y, Z and F), and the intended wind direction. All marks other than the race committee signal boat are inflatable buoys. Positions are approximate and the diagram is not to scale.

#### Notes:

- S When a starting mark for a downwind start, may be on either side of the race committee signal boat.

Bearings are magnetic. Distances are nautical miles (NM). Bearings, distances, and positions are approximate. Each temporary mark is shown with its label in a circle. Each permanent mark is near its label in a square box.

- D Duwamish Head Lt. (LL #16910)
- E Shilshole Bay Approach Buoy (LL #16785)
- H Temporary mark 0.3 NM E of Skiff Pt.
- I Temporary mark 0.5 NM N of Alki Pt.
- J Shilshole Bay ACOE N Mooring Buoy 0.25 NM SSW of N entrance
- K Blakely Rock (LL #16830)
- L Shilshole Bay ACOE S Mooring Buoy 0.5 NM SW of S entrance
- M Meadow Pt. Buoy (LL #16765)
- N Temporary mark 1.0 NM E of Traffic Separation Lane Lighted Buoy SF (LL #16745)
- P Temporary mark 0.5 NM NNE of Pt. Monroe
- Q Temporary mark 3.0 NM bearing 340° from Meadow Pt. Buoy
- R Temporary mark 0.5 NM SW of Pt. Wells
- T Temporary mark 0.5 NM SE of Pt. Jefferson
- U White spar buoy 2.9 NM bearing 6° from Meadow Pt. Buoy at 47° 44.4N, 122° 22.95W
- V Temporary mark 0.3 NM NNE of Wing Pt.
- W West Pt. Buoy (LL #16805)